



1-Needle, Overdging Industrial Sewing Machine

MO-6704S-0E4

2-Needle, Overdging Industrial Sewing Machine

MO-6714S-BE6

Safety Stitch Industrial Sewing Machine

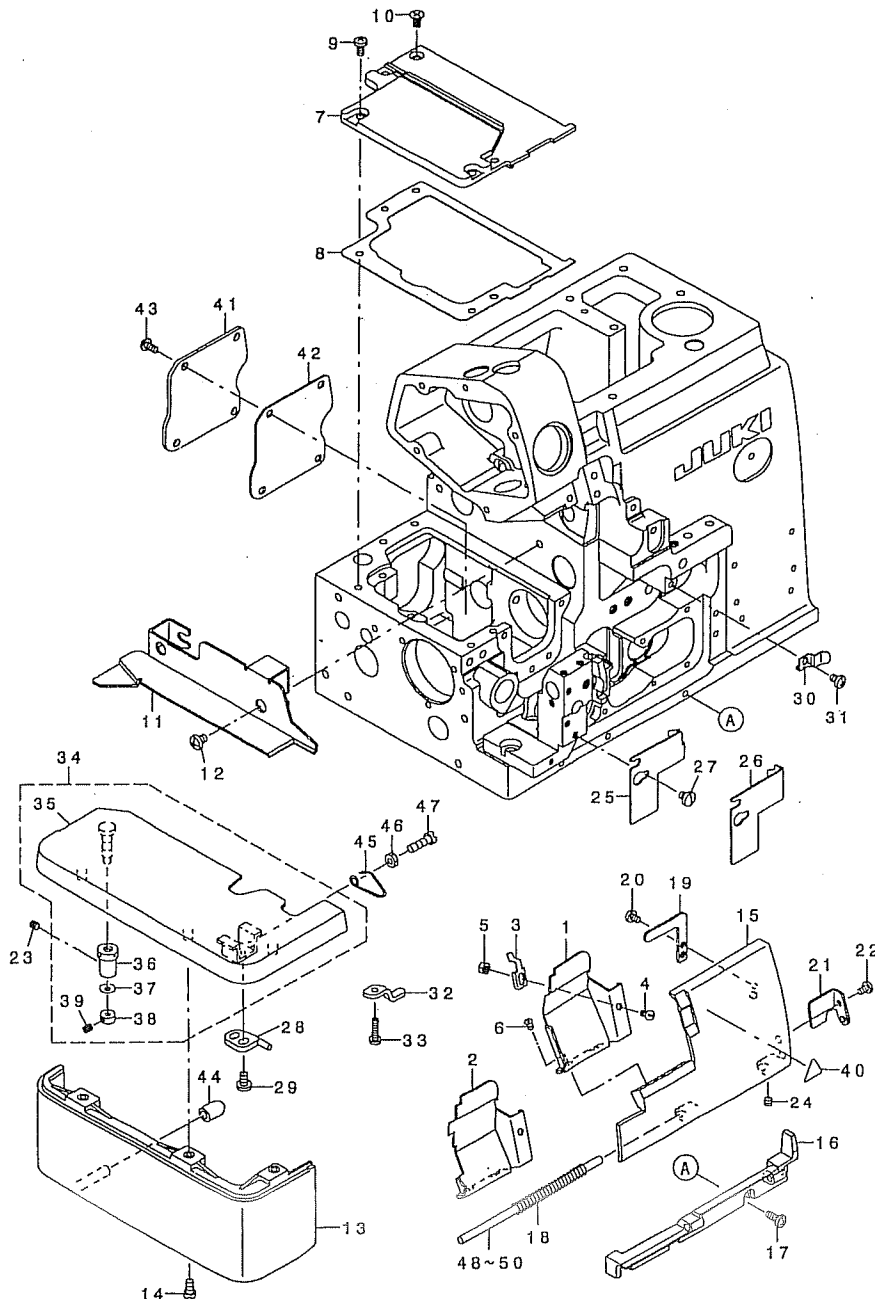
MO-6716S-DE4

PARTS LIST

29352408

No.1326-00

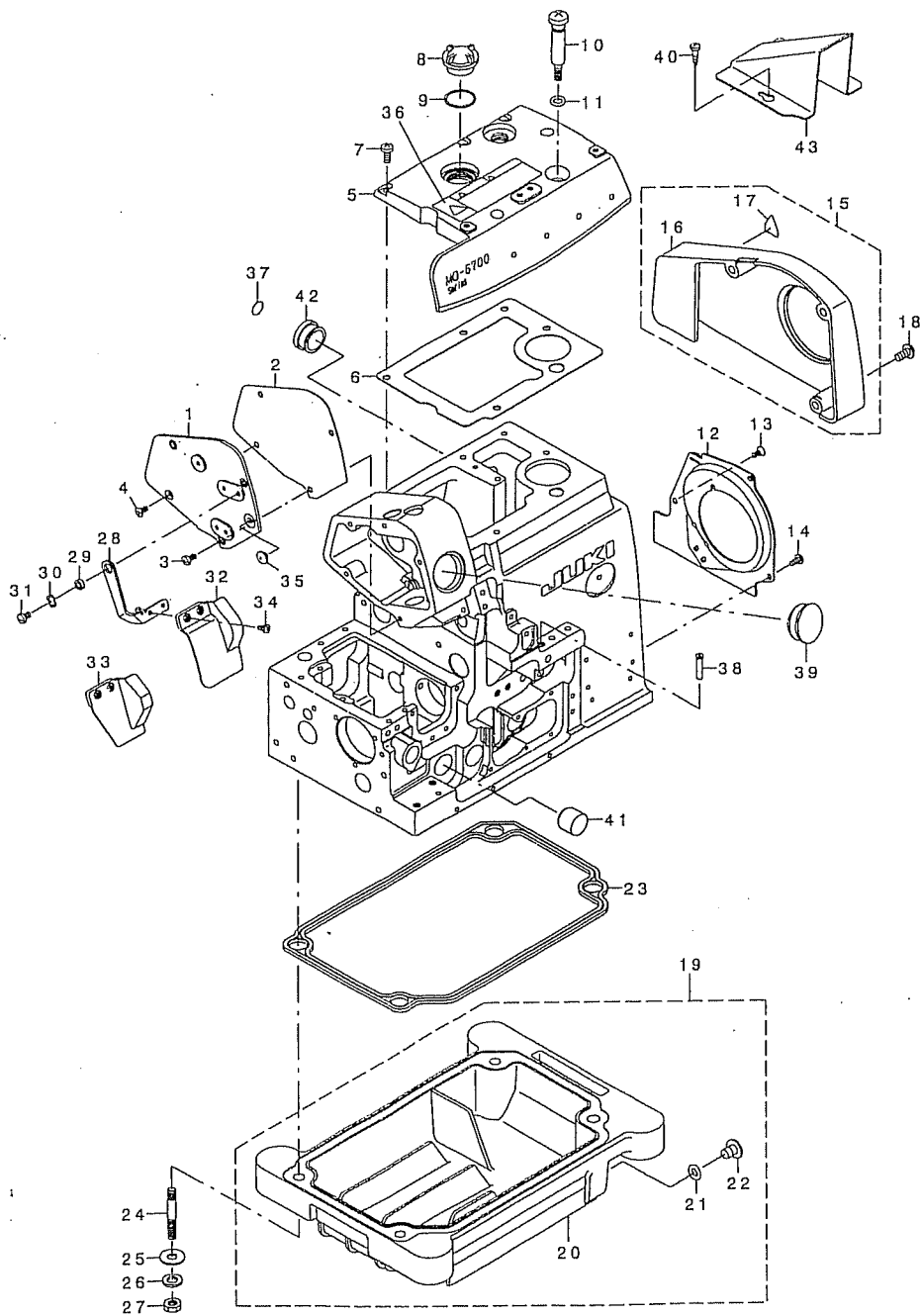
1. MISCELLANEOUS COVER COMPONENTS (1)



REF. NO	NOTE	PART NO.	DESCRIPTION	Qty
1	#01	122-56707	CLOTH WASTE COVER	1
2	#02	121-47807	CLOTH WASTE COVER	1
3		131-02405	CROTH WASTE COVER STOPPER	1
4		SS-2090520-SL	SCREW 9/64-40 L=5	1
5		NS-6090310-SN	NUT 9/64-40	1
6		SS-3090610-SP	SCREW 9/64-40 L=6	2
7		132-00704	FEED MECHANISM COVER	1
8		132-00803	FEED MECHANISM COVER GASKET	1
9		SM-4040855-SP	SCREW	4
10		SM-1040801-SC	SCREW M4X0.7 L=8	1
11		123-42101	CLOTH BASE SIDE COVER	1
12		SS-4120615-SP	SCREW 3/16-28 L=6	2
13		131-03809	CLOTH BASE COVER	1
14		SS-4091015-SP	SCREW 9/64-40 L=10	2
15		131-00904	LOOPER COVER	1
16		131-00805	LOOPER COVER BRACKET	1
17		SM-4041055-SP	SCREW M4 L=10	3
18		131-01209	LOOPER COVER SPRING	1
19		131-01407	LOOPER COVER PRESSER PLATE	1
20		SS-7090530-SP	SCREW 9/64-40 L= 4.5	1
21		131-01001	LOOPER COVER GUIDE PLATE	1
22		SS-7090610-SP	SCREW 9/64-40 L=6	1
23		SS-8110410-TP	SCREW 11/64-40 L= 3.5	1
24		SS-8110410-TP	SCREW 11/64-40 L= 3.5	1
25	#01	131-01506	CLOTH WASTE COVER , LEFT	1
26	#02	131-01605	CLOTH WASTE COVER , LEFT	1
27		SS-7110510-SP	SCREW 11/64-40 L=5	2
28		121-03305	CLOTH BASE SWITCH-TYPE STOPPER	1
29		SS-7110710-SP	SCREW 11/64-40 L=7	2
30		131-01308	LOOPER COVER PRESSER SPRING	1
31		SM-4040655-SP	SCREW M4 L=6	1
32		131-01803	CROTH BASE SUPPORT PLATE	1
33		SS-7091410-SP	SCREW 9/64-40 L=13.5	1
34		121-05359	CLOTH BASE ASM.	1
35		121-02752	CLOTH BASE ASM.	(1)
36		115-01301	ECCENTRIC BUSHING	(1)
37		WZ-0420350-KP	DISC SPRING	(1)
38		CS-0400671-SD	THRUST HOLDER	(1)
39		SM-8040302-TP	SETScrew	(1)
40		CW-3002000-01	ATTENTION SEAL	1
41		132-01504	ADJUSTING HOLE COVER	1
42		132-01603	ADJUSTING HOLE COVER GASKET	1
43		SM-4040855-SP	SCREW	4
44		131-04302	CLOTH BASE COVER RUBBER PLUG	1
45		131-02207	CLOTH BASE SWITCH-TYPE SPRING	1
46		NS-6110420-SP	NUT 11/64-40	1
47		SS-6111440-SP	SCREW 11/64-40 L=14.0	1
48	#03	132-40007	LOOPER COVER HINGE SHAFT A	1
49	#03	132-40106	LOOPER COVER HINGE SHAFT B	1
50	#03	132-40205	LOOPER COVER HINGE SHAFT C	1

Note #01....FOR MO-6704S,MO-6714S
#02....FOR MO-6716S
#03....SELECTIVE PARTS

2. MISCELLANEOUS COVER COMPONENTS (2)



REF. NO	NOTE	PART NO.	DESCRIPTION	Qty
1		132-00209	SIDE COVER	1
2		132-00308	SIDE COVER GASKET	1
3		SM-4040855-SP	SCREW	3
4		SM-1040801-SC	SCREW M4X0.7 L=8	1
5		132-00506	UPPER COVER	1
6		132-00605	UPPER COVER GASKET	1
7		SM-4051255-SP	SCREW M5 L=12.	5
8		229-24708	OIL SIGHT WINDOW	1
9		131-70006	RUBBER RING	1
10		131-04500	OIL DRAIN SCREW	1
11		131-70204	RUBBER RING	1
12		132-01009	COOLING FAN PLATE	1
13		SM-1040801-SC	SCREW M4X0.7 L=8	1
14		SM-4040855-SP	SCREW	2
15		132-01454	BELT COVER ASM.	1
16		132-01405	BELT COVER	(1)
17		CM-3002000-A1	CAUTION LABEL (16)	(1)
18		SS-4151215-SP	SCREW 15/64-28 L=12	3
19		131-02553	OIL RESERVOIR ASM.	1
20		131-02504	OIL RESERVOIR	(1)
21		131-70105	RUBBER RING	(1)
22		131-71004	DRAIN SCREW	(1)
23		131-02603	OIL RESERVOIR GASKET	1
24		131-03908	SCREW STUD	4
25		WP-0751576-SD	WASHER 7.5X19X1.5	4
26		WS-0822010-KP	SPRING WASHER 8.2X15X2	4
27		NS-6680410-SP	NUT 9/32-28	4
28		132-01108	SAFETY PLATE BRACKET	1
29		131-04807	SAFETY PLATE BRACKET COLLAR	1
30		WZ-0850302-KO	WAVED WASHER 8.5X12.5X0.3	1
31		SS-5110710-SP	SCREW 11/64-40 L=7	1
32	#02	132-01306	SAFETY PLATE	1
33	#01	132-01207	SAFETY PLATE	1
34		SS-7090611-SL	SCREW 9/64-40 L=6.1	2
35		132-04003	SAFETY PLATE BUSH	1
36		CM-3002001-B1	SAFETY LABEL 12	1
37		229-01805	GROUND MARK	1
38		131-02900	THREAD GUIDE, LARGE	2
39		107-53309	WINDOW PLATE RUBBER PLUG	1
40		SK-3412001-SE	WOOD SCREW D=4.1 L=20	2
41	#01	TA-1871602-R0	RUBBER PLUG	1
42		TA-2050805-R0	RUBBER PLUG	1
43		131-80700	BELT COVER (B)	1

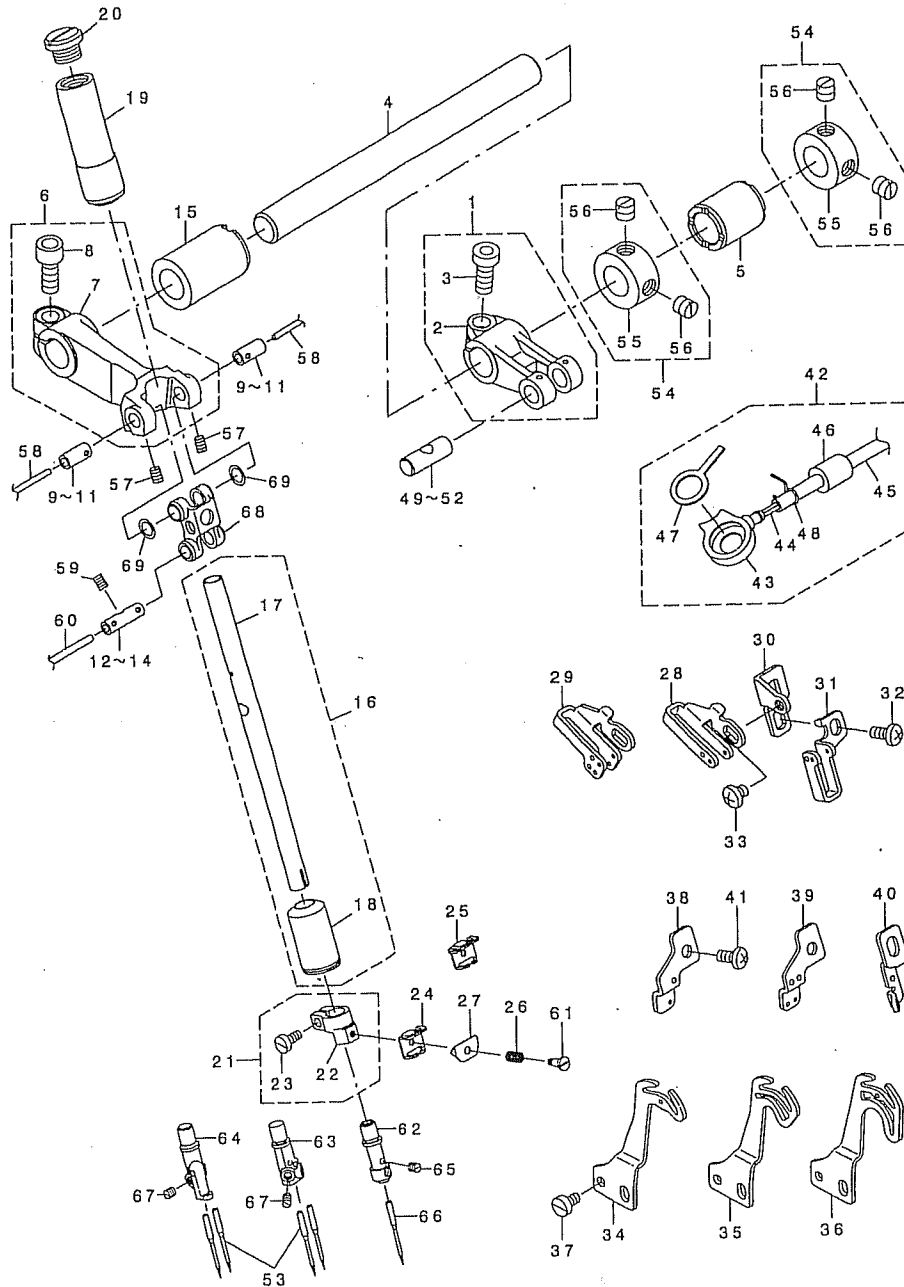
Note #01....FOR MO-6704S,MO-6714S
#02....FOR MO-6716S

REF.NO	NOTE	PART NO.	DESCRIPTION	Qty
1		132-05059	CRANKSHAFT ASM.	1
2		132-05000	CRANKSHAFT	(1)
3		SS-5080212-TP	SCREW 1/8-44 L=2	(5)
4		131-07602	HANDWHEEL (A)	1
5		SS-8151150-TP	SCREW 15/64-28 L=10.5	2
6		131-07800	THRUST COLLAR	1
7		SM-4050855-SP	SCREW M5 L=8	3
8		118-11619	COOLING FAN	1
9		131-08501	CRANKSHFT OIL SHIELD	1
10		119-56505	HANDWHEEL C	1
11		SS-7111810-TP	SCREW 11/64-40 L=18	3
12		SS-9681610-TP	SCREW 9/32-28 L=16	1
13		WP-0764016-SP	WASHER	1
14		131-70303	RUBBER RING	1
15		WZ-2640310-KH	WAVED WASHER 26.4X33.9X3.5	1
16		131-08600	CRANKSHAFT BALL BEARING B	1
17		B1212-704-000	BEARING RETAINER	1
18		131-08600	CRANKSHAFT BALL BEARING B	1
19		132-05406	CRANKSHAFT BUSHING C	1
20		131-04906	OIL ADJUSTING BAR	1
21	#01	131-08808	CRANKSHAFT BALL BEARING D	1
22	#02	131-08907	CRANKSHAFT BALL BEARING D	1
23	#01	131-08006	CRANKSHAFT BUSHING D	1
24	#02	131-08105	CRANKSHAFT BUSHING D	1
25		121-08403	CRANKSHAFT BUSHING D GASKET	1
26		SM-4040855-SP	SCREW	3
27		131-08303	BEARING HOLDING PLATE	1
28		121-09153	CONNECTING ROD ASM.	1
29		SS-7111810-TP	SCREW 11/64-40 L=18	2
30		121-22362	UPPER LOOPER ROD ASM.	1
31		SS-7111810-TP	SCREW 11/64-40 L=18	(2)
32		SS-7111410-TP	SCREW 11/64-40 L=14	(2)
33		SM-6061202-TP	SCREW M6 L=12	(1)
34	#01	121-23360	LOWER LOOPER ROD ASM., A	1
35		SS-7111810-TP	SCREW 11/64-40 L=18	(2)
36		SS-7111410-TP	SCREW 11/64-40 L=14	(2)
37		SM-6061202-TP	SCREW M6 L=12	(1)
38	#02	121-20150	LOWER LOOPER ROD ASM., B	1
39		SS-7111810-TP	SCREW 11/64-40 L=18	(2)
40		SS-7111410-TP	SCREW 11/64-40 L=14	(2)
41		132-22807	LOOPER ROD CENTER REST ,LEFT	2
42		132-22906	LOOPER ROD CENTER REST ,RIGHT	2
43		121-32155	KNIFE DRIVING ROD ASM.	1
44		SS-7111810-TP	SCREW 11/64-40 L=18	2
45		SS-7110840-SP	SCREW 11/64-40 L=7.3	1
46		SS-7110840-SP	SCREW 11/64-40 L=7.8	1
47		132-05901	BALANCER	1
48		SS-6081210-TP	SCREW 1/8-44 L=12	2

Note #01...FOR MO-6704S,MO-6714S
#02...FOR MO-6716S

*FOR BALL HOLDER ASM. ,ORDER FOR SET ONLY CAN BE ACCEPTED

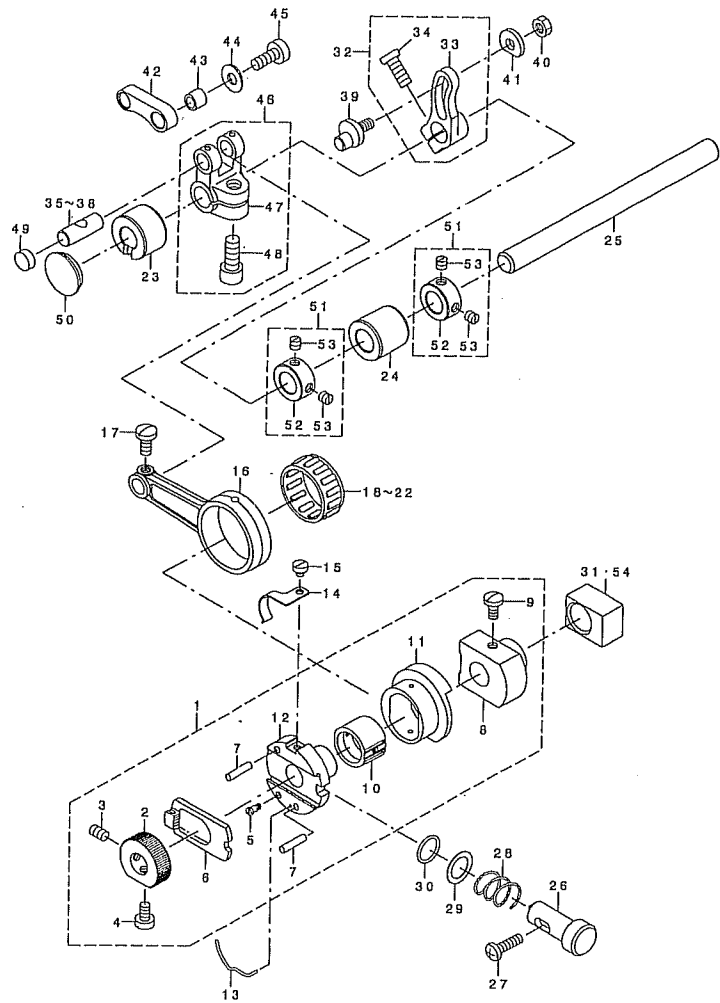
4. NEEDLE DRIVING SHAFT COMPONENTS



REF.NO	NOTE	PART NO.	DESCRIPTION	Qty
1		131-10556	FEED FORKED CRANK ASM.	1
2		131-10507	NEEDLE DRIVING BRANCH CRANK	(1)
3		SM-6061402-TP	SCREW M6 L=14	(1)
4		131-10606	NEEDLE DRIVING SHAFT	1
5		122-80301	BUSHING, REAR	1
6		132-09853	NEEDLE DRIVING ARM ASM.	1
7		132-09804	NEEDLE DRIVING ARM	(1)
8		SM-6061402-TP	SCREW M6 L=14	(1)
9	#07	132-09101	NEEDLE DRIVING ARM PIN A	2
10	#07	132-09200	NEEDLE DRIVING ARM PIN B	2
11	#07	132-09309	NEEDLE DRIVING ARM PIN C	2
12	#07	132-09408	NEEDLE DRIVING PIN A	1
13	#07	132-09507	NEEDLE DRIVING PIN B	1
14	#07	132-09606	NEEDLE DRIVING PIN C	1
15		131-10002	BUSHING, REAR	1
16		132-08350	NEEDLE ROD (A) ASM.	1
17		132-08301	NEEDLE ROD (A)	(1)
18		132-07709	NEEDLE ROD BUSHING, LOWER	(1)
19		132-09705	NEEDLE ROD BUSHING, UPPER	1
20		132-07808	NEEDLE ROD BUSHING CAP SCREW	1
21		131-10259	NEEDLE CLAMP HOLDER ASM.	1
22		131-10200	NEEDLE CLAMP HOLDER	(1)
23		SS-6080720-SP	SCREW 1/8-44 L=7	(1)
24	#01	131-10705	NEEDLE THREAD PRESSER GUIDE A	1
25	#02	131-10804	NEEDLE THREAD PRESSER GUIDE B	1
26		131-10903	NEEDLE THREAD PRESSER SPRING	1
27		131-11000	NEEDLE THREAD PRESSER PLATE A	1
28	#03	132-08806	NEEDLE THREAD GUIDE	1
29	#04	132-08905	THREAD GUIDE, 2-NEEDLE	1
30		132-08707	NEEDLE THREAD GUIDE BASE	1
31	#02	131-11109	THREAD GUIDE, CHAIN LOOPER	1
32		SM-4040855-SP	SCREW	2
33		SS-4110515-SP	SCREW 11/64-40 L=5	1
34	#05	131-11208	NEEDLE THREAD TAKE-UP LEVER	1
35	#04	131-11307	TAKE-UP LEVER, 2-NEEDLE	1
36	#02	131-11406	TAKE-UP LEVER, CHAIN LOOP	1
37		SS-6090670-TP	SCREW 9/64-40 L=6	2
38	#03	131-11505	NEEDLE THREAD BALANCE GUIDE	1
39	#04	131-11604	TAKE-UP LEVER GUIDE, 2-NEEDLE	1
40	#02	131-11703	TAKE-UP LEVER GUIDE, CHAIN LOOP	1
41		SM-4040855-SP	SCREW	1
42		132-08459	ONCE THROUGH OIL PIPE ASM.	1
43		132-08509	ONCE THROUGH OIL COVER	(1)
44		CQ-2000000-00	OIL WICK	(0.8)
45		236-30007	TUBE	(0.39)
46		132-44009	ONCE THROUGH OIL PIPE BUSHING	(1)
47		132-08608	ONCE THROUGH OIL FELT	(1)
48		131-42609	PIPE CLAMP	(1)
49	#07	131-22007	FEED BRANCH CRANK PIN A	1
50	#07	131-22106	FEED BRANCH CRANK PIN B	1
51	#07	131-22205	FEED BRANCH CRANK PIN C	1
52	#07	131-22304	FEED BRANCH CRANK PIN D	1
53	#06	NDC-270B1100	NEEDLE DCX27 #11	2
54		131-72754	THRUST COLLAR ASM.	2
55		131-72705	THRUST COLLAR	(1)
56		SS-8660610-TP	SCREW 1/4-40 L=6	(2)
57		SS-8090530-TP	SCREW 9/64-40 L= 5.0	2
58		CQ-2020000-00	OIL WICK	0.09
59		SS-8090530-TP	SCREW 9/64-40 L= 5.0	1
60		CQ-2520000-00	OIL WICK	0.04
61		SD-0280401-SL	HINGE SCREW D=2.8 H=4	1
62	#05	131-75005	NEEDLE CLAMP, 1-NEEDLE	1
63	#04	122-56905	NEEDLE CLAMP, 2-NEEDLE (BEG)	1
64	#02	122-57002	CHAIN LOOPER NEEDLE CLAMP, DEA	1
65	#05	SS-8080310-TP	SCREW 1/8-44 L=2.8	1
66	#05	WDC-270B1100	NEEDLE DCX27 #11	1
67	#06	SS-8080310-TP	SCREW 1/8-44 L=2.8	2
68		132-08004	NEEDLE DRIVING LINK	1
69		132-08103	NEEDLE DRIVING LINK WASHER	2

Note #01....FOR MO-6704S, MO-6714S
#02....FOR MO-6716S
#03....FOR MO-6704S, MO-6716S
#04....FOR MO-6714S
#05....FOR MO-6704S
#06....FOR MO-6714S, MO-6716S
#07....SELECTIVE PARTS

5. FEED MECHANISM COMPONENTS (1)

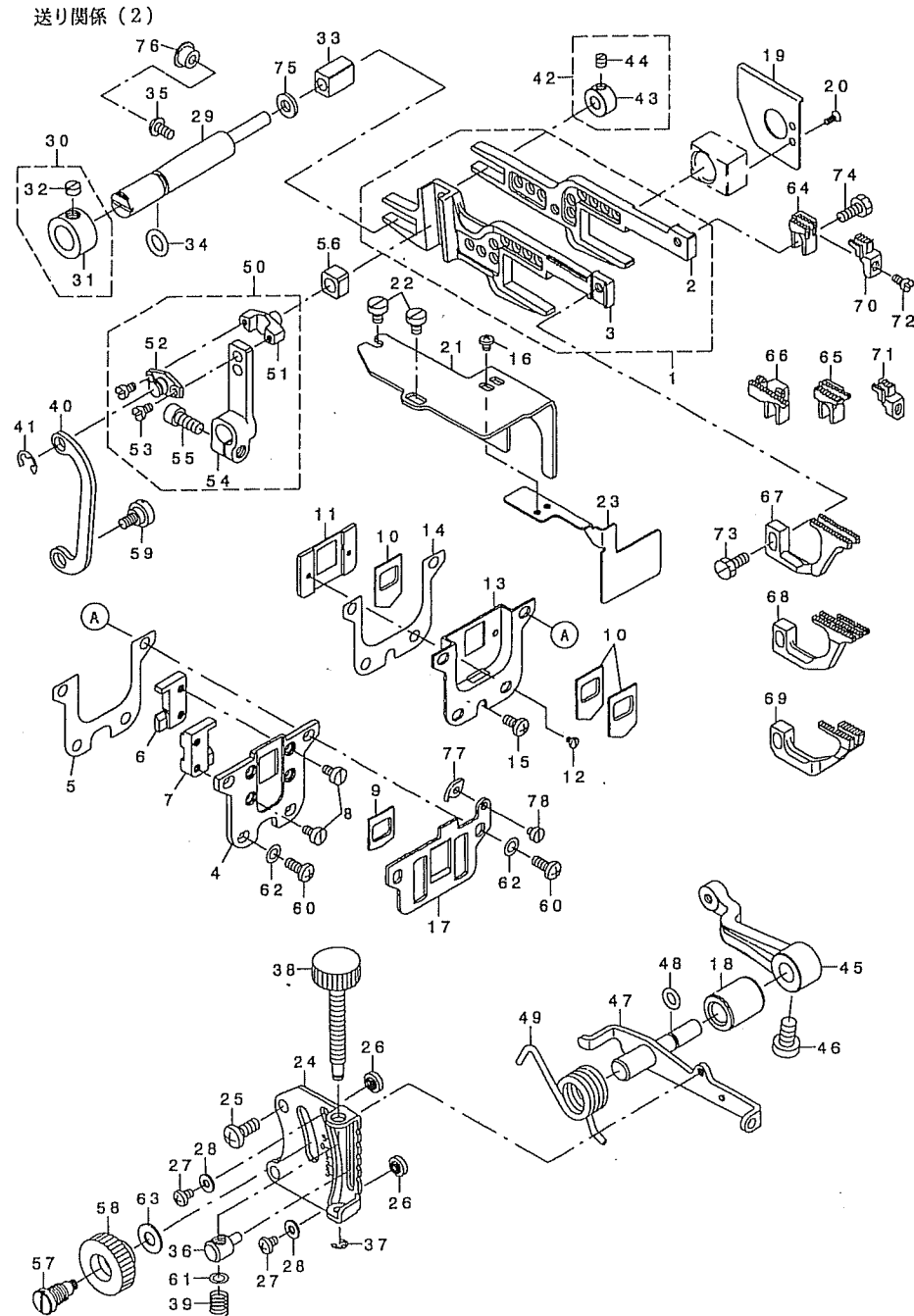


REF.NO	NOTE	PART NO.	DESCRIPTION	Qty
1		121-16174	FEED ECCENTRIC BODY ASM.	1
2		121-18808	RATCHET GEAR	(1)
3		SS-8110750-SP	SCREW 11/64-40 L= 6.5	(1)
4		SS-6110710-TP	SCREW 11/64-40 L= 6.5	(1)
5		SD-0260271-SP	HINGE SCREW D= 2.60 H= 2.7	(1)
6		B1604-704-000	RATCHET PAWL	(1)
7		PS-0300132-KH	SPRING PIN 3X13	(2)
8		121-16117	FEED ECCENTRIC BODY	(1)
9		SS-7110810-SP	SCREW 11/64-40 L= 8.0	(2)
10		121-16307	FEED CAM BLOCK	(1)
11		121-16216	FEED CAM	(1)
12		121-16406	FEED ADJUSTING CAM	(1)
13		131-22502	RATCHET PAWL SPRING	1
14		131-19300	RATCHET GEAR SPRING	1
15		SS-6080320-SP	SCREW 1/8-44 L= 2.5	1
16		131-18708	FEED CRANK ROD	1
17		SS-7110910-TP	SCREW 11/64-40 L= 8.5	1
18	#01	121-16604	NEEDLE BEARING	1
19	#01	121-16703	NEEDLE BEARING B	1
20	#01	121-16802	NEEDLE BEARING..C.	1
21	#01	121-16901	NEEDLE BEARING..D.	1
22	#01	121-17008	NEEDLE BEARING..E.	1
23		131-19409	FEED SHAFT METAL , FRONT	1
24		131-19508	FEED SHAFT METAL , REAR	1
25		131-19607	FEED SHAFT	1
26		132-16809	PUSH BUTTON SHAFT	1
27		SM-4041455-SN	SCREW M4 L=14	1
28		132-16601	PUSH BUTTON SPRING	1
29		132-16700	PUSH BUTTON SHAFT WASHER	1
30		132-44108	RUBBER RING	1
31	#01	132-17906	SLIDE BLOCK B	1
32		131-19953	MAIN FEED ARM ASM.	1
33		131-19904	MAIN FEED ARM	(1)
34		SM-6051202-TP	SCREW M5X0.8 L=12	(1)
35	#01	131-22007	CRANK PIN A	1
36	#01	131-22106	CRANK PIN B	1
37	#01	131-22205	CRANK PIN C	1
38	#01	131-22304	CRANK PIN D	1
39		131-19706	MAIN FEED ARM PIN	1
40		NS-6620320-SP	NUT 3/16-32	1
41		131-20001	WASHER B	1
42		131-19805	MAIN FEED LINK	1
43		B1620-804-000	PIN COLLAR	1
44		131-20605	WASHER	1
45		SS-6121220-TP	SCREW 3/16-28 L=11.5	1
46		131-22452	FEED BRANCH CRANK ASM.	1
47		131-22403	FEED BRANCH CRANK	(1)
48		SM-6061402-TP	SCREW M6 L=14	(1)
49		TA-1030402-RO	RUBBER PLUG D=10.3 L=4	1
50		TA-2050416-RO	RUBBER PLUG	1
51		131-72556	FEED SHAFT THRUST COLLAR ASM.	2
52		131-72507	FEED SHAFT THRUST COLLAR	(1)
53		SS-8110410-TP	SCREW 11/64-40 L= 3.5	(2)
54	#01	132-17807	SLIDE BLOCK A	1

Note #01....SELECTIVE PARTS

MO-6700S SERIES No.1

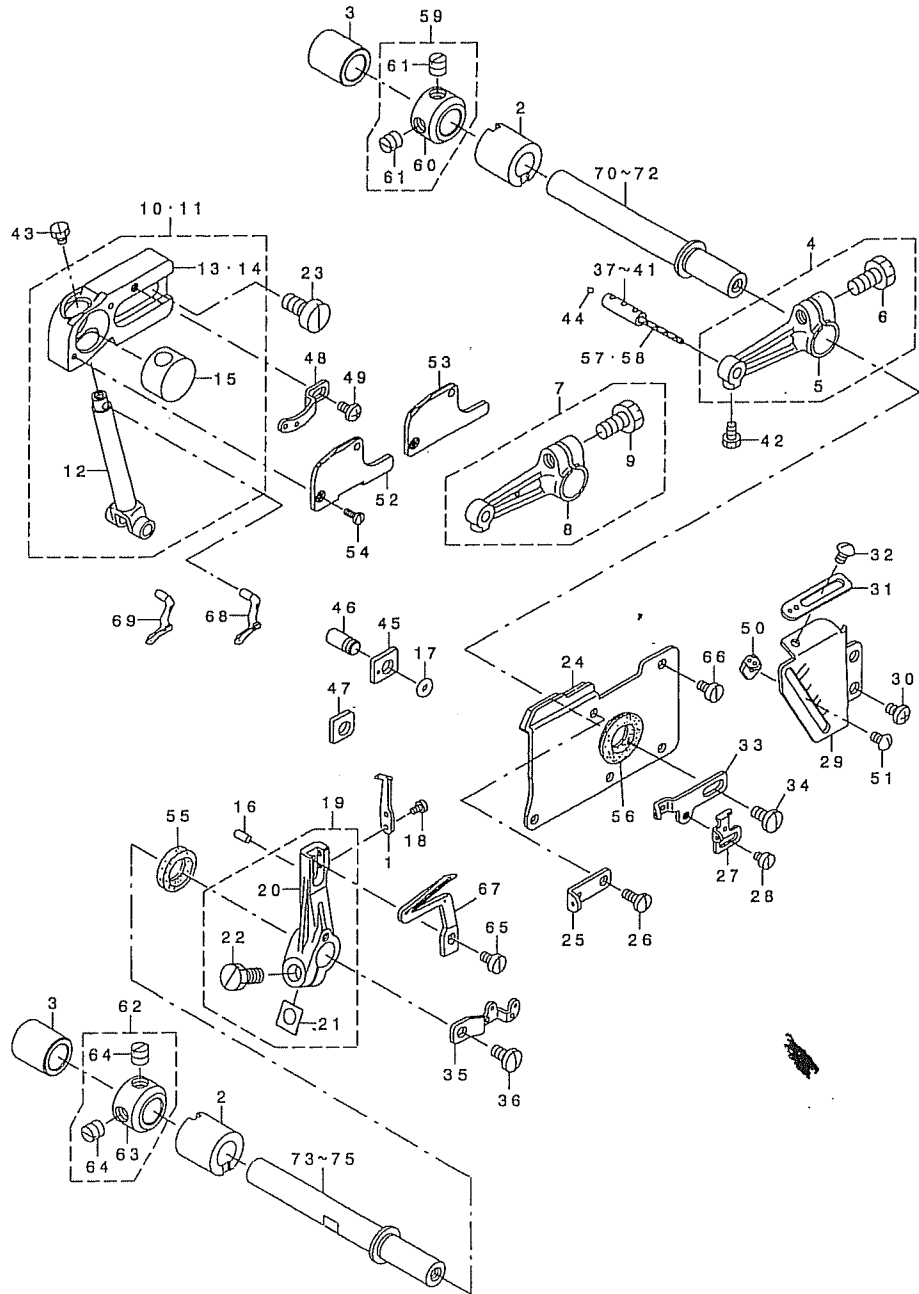
6. FEED MECHANISM COMPONENTS (2)



REF.NO	NOTE	PART NO.	DESCRIPTION	Qty
1		132-15157	FEED ROCKER ASM.	1
2		132-15108	MAIN FEED BAR	(1)
3		132-15207	DIFFERENTIAL FEED BAR	(1)
4		132-15306	RUBBER CASE	1
5		132-15405	RUBBER CASE GASKET	1
6		132-15504	FEED BAR SUPPORT , RIGHT	1
7		132-15603	FEED BAR SUPPORT , LEFT	1
8		SS-6090620-TP	SCREW	4
9		121-18303	DUST-PROOF RUBBER	1
10		121-18204	OIL SHIELD RUBBER	3
11		132-15702	RUBBER HOLDING PLATE	1
12		SS-7060310-SP	SCREW 3/32-56 L=3	2
13		132-15900	OIL SHIELD CASE	1
14		132-16007	OIL SHIELD CASE GASKET	1
15		SM-4040855-SP	SCREW	1
16		SM-4030455-SP	SCREW	2
17		132-15801	THROAT PLATE SUPPORT	1
18		131-22700	ADJUSTING SHAFT METAL	1
19		132-16106	OIL SHIELD PLATE	1
20		SS-1060610-SP	SCREW 3/32-56 L=5.5	2
21		132-16205	FEED CAM OIL SHIELD PLATE	1
22		SM-6040600-SP	SCREW M4 L=6	2
23		132-16304	OIL SHIELD PLATE	1
24		131-22809	DIFFERENTIAL FEED GRADUATION	1
25		SM-4051255-SP	SCREW M5 L=12	2
26		131-21405	ADJUSTING STOPPER	2
27		SS-4090515-SP	SCREW 9/64-40 L=5	2
28		WP-0371016-SD	WASHER 3.7X8X1	2
29		131-20902	SUPPORT SHAFT	1
30		131-21058	HRUST COLLAR ASM.	1
31		131-21009	HRUST COLLAR	(1)
32		SS-8660330-SP	SCREW 1/4-40 L= 3.0	(1)
33		131-20803	SLIDE BLOCK	1
34		131-70204	RUBBER RING	1
35		SM-4040855-SP	SCREW	1
36		132-17708	DIFFERENTIAL FEED BLOCK	1
37		RE-0300000-KO	E-RING 3	1
38		132-13012	ADJUSTING SCREW	1
39		131-23302	DIFFERENTIAL FEED SCREW SPRING	1
40		131-21306	ADJUSTING LINK	1
41		RE-0500000-KO	E-RING 5	1
42		131-21256	SUPPORT SHAFT COLLAR ASM.	1
43		131-21207	SUPPORT SHAFT COLLAR	(1)
44		SS-8110410-TP	SCREW 11/64-40 L= 3.5	(1)
45		131-21900	DIFFERENTIAL FEED ROCKER	1
46		SS-6661110-SP	SCREW 1/4-40 L=11	1
47		132-17351	ROCKER SHAFT ASM.	1
48		131-70501	RUBBER RING	1
49		131-21603	ADJUSTING LEVER SPRING	1
50		132-18052	DIFFERENTIAL FEED ARM ASM.	1
51		118-25304	DIFFERENTIAL FEED PIN	(1)
52		118-26401	DIFFERENTIAL FEED PIN COVER	(1)
53		SS-6080410-SP	SCREW 1/8-44 L=4	(2)
54		132-18003	DIFFERENTIAL FEED ARM	(1)
55		SM-6051202-TP	SCREW M5X0.8 L=12	(1)
56		132-18102	SLIDE BLOCK	1
57		132-17401	DIFFERENTIAL FEED HINGE SCREW	1
58		132-17500	DIFFERENTIAL FEED LOCK NUT	1
59		SD-0720271-SP	HINGE SCREW D=7,2 H=2,7	1
60		SM-4041055-SP	SCREW M4 L=10	4
61		WP-0460556-SD	WASHER 4.6X7.5X0.5	1
62		WP-0480856-SP	WASHER 4.8X8.4X0.8	4
63		WP-0621016-SD	WASHER 6.2X13X1	1
64	#03	118-82107	MAIN FEED DOG	1
65	#04	119-49807	MAIN FEED DOG (F-25)	1
66	#02	118-82800	MAIN FEED DOG	1
67	#03	B1657-804-00T	DIFFERENTIAL FEED DOG	1
68	#04	119-49906	DIFFERENTIAL FEED DOG	1
69	#02	121-72805	DIFFERENTIAL FEED DOG	1
70	#01	131-91300	AUXILIARY FEED DOG	1
71	#02	131-91408	AUXILIARY FEED DOG	1
72		SS-4080620-TP	SCREW 1/8-44 L=6	1
73		SS-9111010-SP	SCREW 11/64-40 L=9.5	1
74		SS-9111050-SP	SCREW 11/64-40 L=9.5	1
75		131-21108	WASHER	1
76		TA-0800504-RO	PLUG D=8 L=4.5	1
77		132-00902	FEED MECHANISM COVER PRESSER	1
78		SS-6080340-SP	SCREW 1/8-44 L=2.9	1

Note #01...FOR MO-6704S,MO-6714S
#02...FOR MO-6716S
#03...FOR MO-6704S
#04...FOR MO-6714S

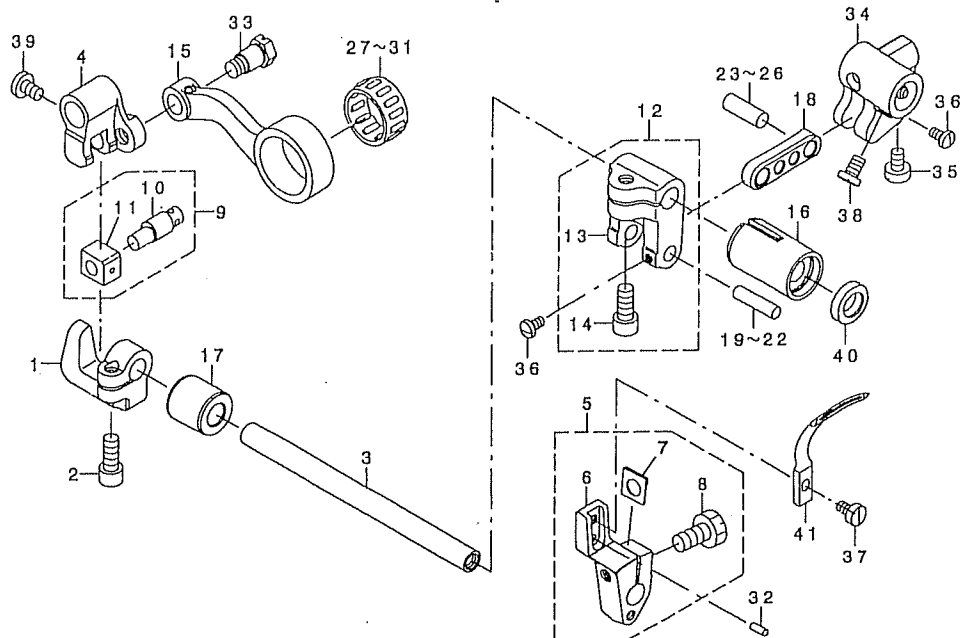
7. UPPER & LOWER LOOPER COMPONENTS



REF. NO	NOTE	PART NO.	DESCRIPTION	Qty
1		118-90001	TRAVELING NEEDLE GUARD	1
2		132-22609	LOOPER SHAFT FRONT BUSHING	2
3		132-22708	LOOPER SHAFT REAR BUSHING	2
4	#01	131-31057	UPPER LOOPER ARM A ASM.	1
5		131-31008	UPPER LOOPER ARM A	(1)
6		SS-9151210-TP	SCREW 15/64-28 L=11.8	(1)
7	#02	131-31156	UPPER LOOPER ARM B ASM.	1
8		131-31107	UPPER LOOPER ARM B	(1)
9		SS-9151210-TP	SCREW 15/64-28 L=11.8	(1)
10	#01	132-24456	GUIDE SUPPORT ASM.	1
11	#02	132-24555	GUIDE SUPPORT ASM. B	1
12		132-24605	UPPER LOOPER HOLDER	(1)
13	#01	118-33613	UPPER LOOPER GUIDE SUPPORT	(1)
14	#02	118-93302	UPPER LOOPER GUIDE SUPPORT B	(1)
15		132-22104	UPPER LOOPER GUIDE	(1)
16		PS-0300062-KH	SPRING PIN 3X6	1
17		131-70600	RUBBER RING	1
18		SS-6060440-TP	SCREW 3/32-56 L=3.5	2
19		131-32550	LOWER LOOPER SUPPORT ARM ASM.	1
20		131-32501	LOWER LOOPER SUPPORT ARM	(1)
21		131-29309	WASHER	(1)
22		SS-9151210-TP	SCREW 15/64-28 L=11.8	(1)
23		SH-6061200-SP	SCREW M6 L=12	2
24		121-23659	OIL SHIELD PLATE ASM.	1
25		123-40600	UPPER LOOPER THREAD GUIDE	1
26		SS-7090850-SP	SCREW 9/64-40 L=8	1
27		123-40709	LOWER LOOPER THREAD TAKE-UP	1
28		SS-6080410-SP	SCREW 1/8-44 L=4	1
29		132-22401	LOOPER THREAD TAKE-UP COVER	1
30		SH-4040655-SP	SCREW M4 L=6	2
31		123-40303	THREAD GUIDE, RIGHT	1
32		SS-3090610-SP	SCREW 9/64-40 L=6	1
33		123-40402	THREAD TAKE-UP, RIGHT	1
34		SS-7110840-SP	SCREW 11/64-40 L=7.8	1
35		123-40907	LOWER THREAD TAKE-UP, LEFT	1
36		SS-7110840-SP	SCREW 11/64-40 L=7.8	1
37	#03	131-31206	UPPER LOOPER HOLDER PIN A	1
38	#03	131-31305	UPPER LOOPER HOLDER PIN B	1
39	#03	131-31404	UPPER LOOPER HOLDER PIN C	1
40	#03	131-31503	UPPER LOOPER HOLDER PIN D	1
41	#03	131-31602	UPPER LOOPER HOLDER PIN E	1
42		SS-9090610-TP	SCREW 9/64-40 L=5.5	1
43		SS-9090410-TP	SCREW	1
44		118-31708	OIL WICK STOPPER BALL	1
45	#04	131-31909	GUIDE SUPPORT GAUGE	1
46		131-31800	GAUGE FIXING PIN	1
47	#05	131-32006	GUIDE SUPPORT GAUGE	1
48		123-40501	THREAD GUIDE, UPPER	1
49		SS-4090615-SP	SCREW 9/64-40 L=6	1
50		123-40808	THREAD GUIDE	1
51		SS-3090610-SP	SCREW 9/64-40 L=6	1
52	#01	132-22203	UPPER LOOPER GAUGE COVER	1
53	#02	132-22302	UPPER LOOPER GAUGE COVER B	1
54		SS-7060610-SP	SCREW 3/32-56 L= 5.5	2
55		B2508-704-000	OIL SEAL	1
56		B2530-704-000	UPPER LOOPER SHAFT RUBBER RING	1
57		CQ-2000000-00	OIL WICK	0.04
58		CQ-2020000-00	OIL WICK	0.04
59	#04	131-72853	THRUST COLLAR ASM.	2
60		131-72804	THRUST COLLAR	(1)
61		SS-8660610-TP	SCREW 1/4-40 L=6	(2)
62	#05	131-72853	THRUST COLLAR ASM.	1
63		131-72804	THRUST COLLAR	(1)
64		SS-8660610-TP	SCREW 1/4-40 L=6	(2)
65		SS-6090620-TP	SCREW	1
66		SS-6090630-TP	SCREW 9/64-40 L=6	4
67		119-99307	LOWER LOOPER	1
68	#01	118-88104	UPPER LOOPER	1
69	#02	121-76004	UPPER LOOPER	1
70	#03	132-21403	UPPER LOOPER GUIDE A	1
71	#03	132-21502	UPPER LOOPER GUIDE B	1
72	#03	132-21601	UPPER LOOPER GUIDE C	1
73	#03	132-21700	UPPER LOOPER GUIDE A	1
74	#03	132-21809	UPPER LOOPER GUIDE B	1
75	#03	132-21908	UPPER LOOPER GUIDE C	1

Note #01....FOR NO-6704S,NO-6716S
#02....FOR NO-6714S
#03....SELECTIVE PARTS
#04....FOR NO-6704S,NO-6714S
#05....FOR NO-6716S

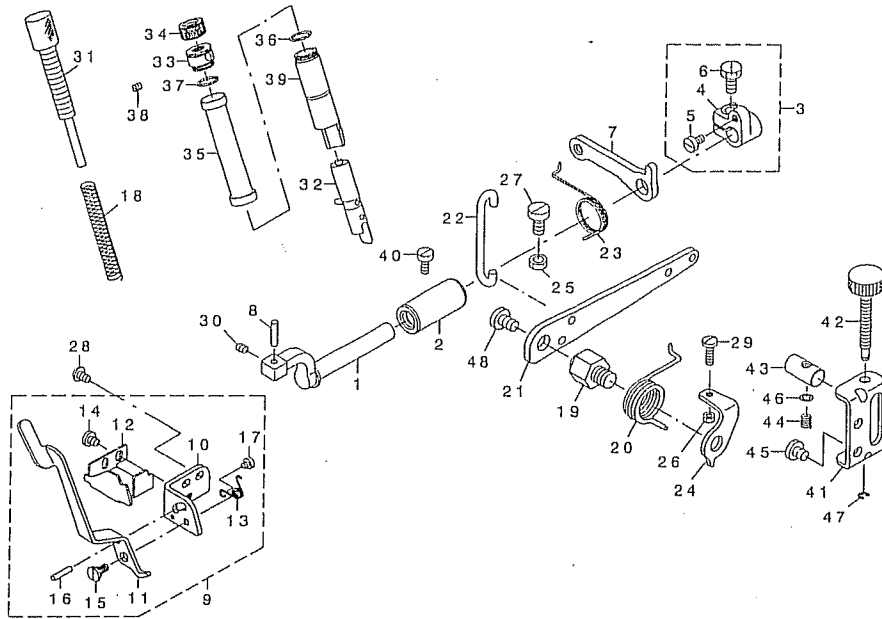
8. CHAIN LOOPER COMPONENTS (FOR MO-6716S)



REF.NO	NOTE	PART NO.	DESCRIPTION	Qty
1		123-42309	BRACKET	1
2		SM-6051202-TP	SCREW M5X0.8 L=12	1
3		131-26909	CHAIN LOOPER SHAFT	1
4		131-26008	FRONT-AND-REAR ARM	1
5		131-29952	CHAIN LOOPER DRIVING ARM ASM.	1
6		131-29903	CHAIN LOOPER DRIVING ARM	(1)
7		131-29309	WASHER	(1)
8		SS-9151210-TP	SCREW 15/64-28 L=11.8	(1)
9		131-26354	SLIDE BLOCK PIN ASM.	1
10		131-26206	CHAIN LOOPER SLIDE BLOCK PIN	(1)
11		131-26305	CHAIN LOOPER SLIDE BLOCK	(1)
12		131-25950	CHAIN LOOPER DRIVING ARM ASM.	1
13		131-25901	CHAIN LOOPER DRIVING ARM	(1)
14		SM-6051202-TP	SCREW M5X0.8 L=12	(1)
15		132-20009	CHAIN LOOPER ROD	1
16		131-28103	BUSHING, FORNT	1
17		131-27006	BUSHING, REAR	1
18		131-27105	CHAIN LOOPER SHAFT DRIV. LINK	1
19	#01	131-26503	PIN , LONG A	1
20	#01	131-26602	PIN , LONG B	1
21	#01	131-26701	PIN , LONG C	1
22	#01	131-26800	PIN , LONG D	1
23	#01	131-27204	PIN , SHORT A	1
24	#01	131-27303	PIN , SHORT B	1
25	#01	131-27402	PIN , SHORT C	1
26	#01	131-27501	PIN , SHORT D	1
27	#01	B2119-816-A00	BEARING A	1
28	#01	B2119-816-B00	BEARING B	1
29	#01	B2119-816-C00	BEARING C	1
30	#01	B2119-816-D00	BEARING D	1
31	#01	B2119-816-E00	BEARING E	1
32		PS-0250062-KH	SPRING PIN 2.5X6	1
33		SD-0720803-TH	STEP-SCREW D=7.24 H=8	1
34		121-21612	DRIVING BALL ARM BRACKET	1
35		SS-6110710-TP	SCREW 11/64-40 L= 6.5	1
36		SS-4080620-TP	SCREW 1/8-44 L=6	2
37		SS-6090620-TP	SCREW	1
38		SS-6110710-TP	SCREW 11/64-40 L= 6.5	2
39		SS-7110720-TP	SCREW 11/64-40 L=7	1
40		B2525-352-000	OIL SEAL RING	1
41		121-20705	CHAIN LOOPER	1

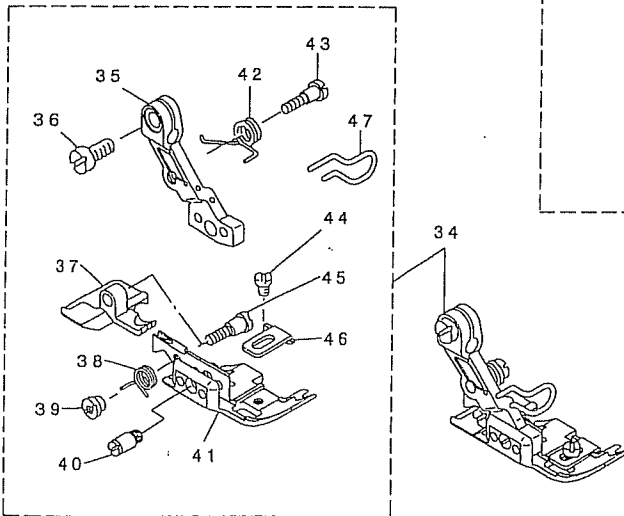
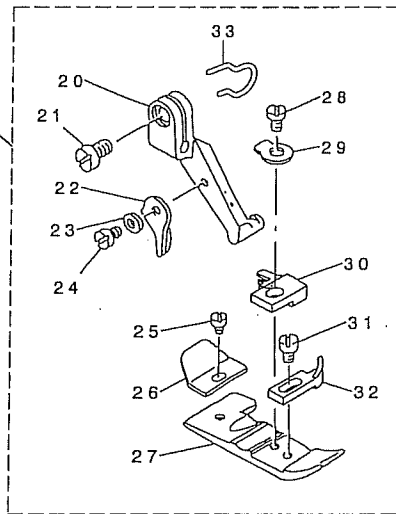
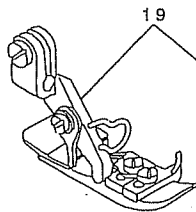
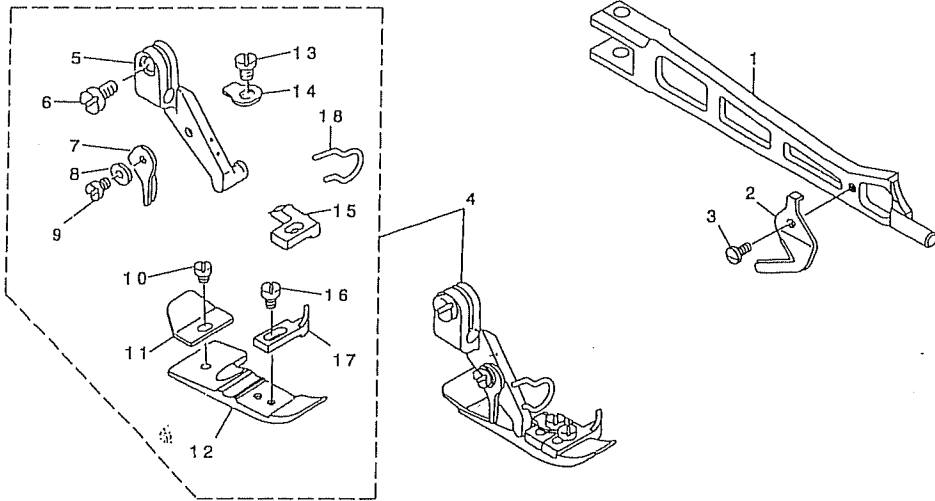
Note #01....SELECTIVE PARTS

9. PRESSER FOOT COMPONENTS (1)



REF. NO	NOTE	PART NO.	DESCRIPTION	Qty
1		121-13205	PRESSER FOOT SHAFT	1
2		131-15100	PRESSER FOOT SHAFT BUSHING	1
3		131-15258	THRUST ARM ASM.	1
4		131-15209	THRUST ARM	(1)
5		SS-6110710-TP	SCREW 11/64-40 L= 6.5	(1)
6		SS-9151210-TP	SCREW 15/64-28 L=11.8	(1)
7		131-16801	LIFTING ARM	1
8		131-15407	PRESSER FOOT ARM HINGE SHAFT	1
9		131-15753	PRESSER LIFTING LEVER BASE ASM	1
10		131-15803	PRESSER LIFTING LEVER BASE	(1)
11		131-15902	PRESSER LIFTING LEVER	(1)
12		131-16009	PRESSER ARM STOPPER	(1)
13		131-16108	PRESSER FOOT LIFTING SPRING	(1)
14		SS-7110510-SP	SCREW 11/64-40 L=5	(2)
15		SD-0640241-SP	HINGE SCREW D= 6.35 H= 2.4	(1)
16		PS-0300142-KH	SPRING PIN 0.3 X 14	(1)
17		SS-6080340-SP	SCREW 1/8-44 L=2.9	(1)
18		131-16207	PRESSER FOOT SPRING	1
19		131-17007	PRESSER LIFTING LEVER SCREW	1
20		131-16306	PRESSER LIFTING LEVER SPRING	1
21		131-16900	PRESSER LIFTING LEVER	1
22		131-16405	PRESSER LIFTING HOOK	1
23		131-16504	LIFTING LEVER ARM SPRING	1
24		131-16603	PRESSER LIFTING LEVER SPRING	1
25		NM-6060003-SC	NUT M6	1
26		NS-6110420-SP	NUT 11/64-40	1
27		SM-6061200-SP	SCREW M6 L=12	1
28		SS-4110715-SP	SCREW 11/64-40 L=7	2
29		SS-7111410-TP	SCREW 11/64-40 L=14	1
30		SS-8110520-TP	SCREW 11/64-40 L= 4.5	1
31		132-12600	PRESSER REGULATOR SCREW	1
32		121-14468	PRESSER BAR ASM.	1
33		122-88700	PRESSER REGULATOR SCREW WASHER	1
34		131-17106	PRESSER REGULATOR NUT	1
35		132-12709	PRESSER BAR COVER	1
36		131-70402	RUBBER RING	2
37		131-70402	RUBBER RING	1
38		SM-8040402-TP	SCREW M4X0.7 L=4	1
39		132-12501	PRESSER BAR BUSHING	1
40		SS-6121020-SP	SCREW 3/16-28 L= 9.5	1
41		132-12808	ADJUSTING BASE	1
42		132-13012	ADJUSTING SCREW	1
43		132-12915	ADJUSTING BLOCK	1
44		131-23302	ADJUSTING SPRING	1
45		SS-7150740-SP	SCREW 15/64-28 L=7	2
46		WP-0460556-SD	WASHER 4.6X7.5X0.5	1
47		RE-0300000-KO	E-RING 3	1
48		SS-7161040-SP	SCREW 1/4-24 L= 9.5	1

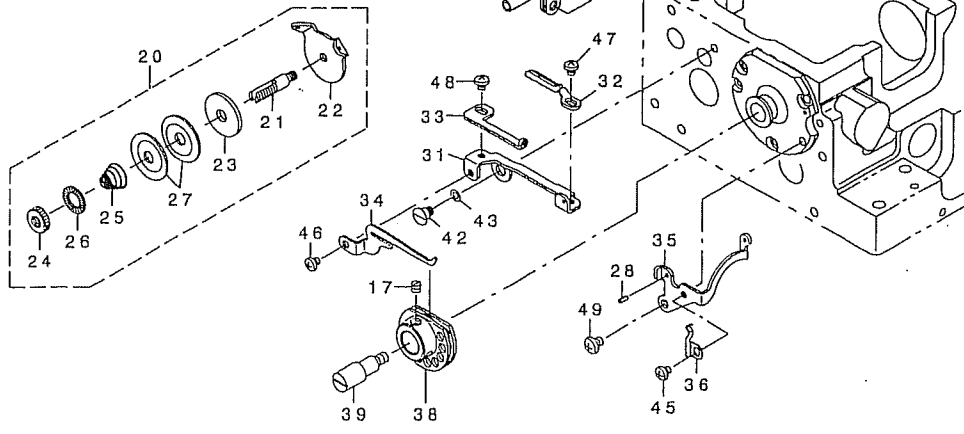
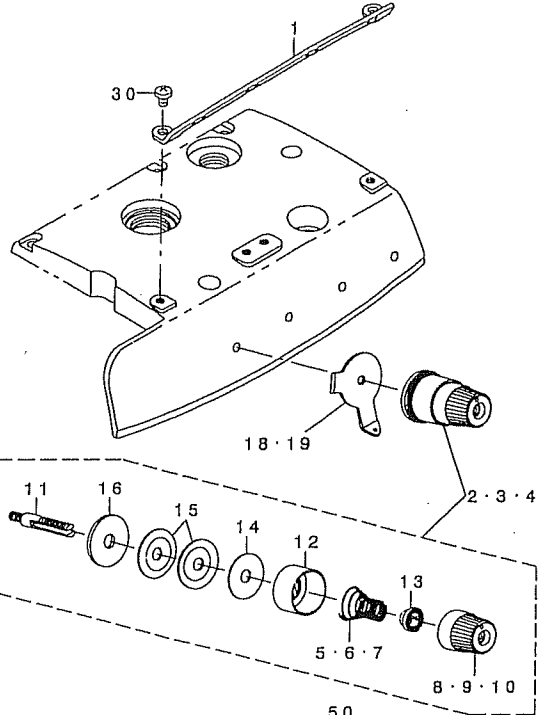
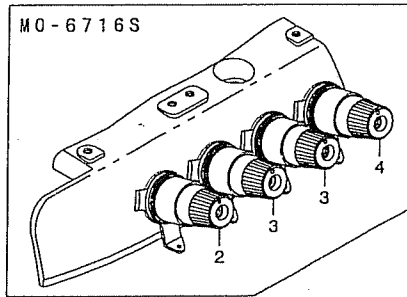
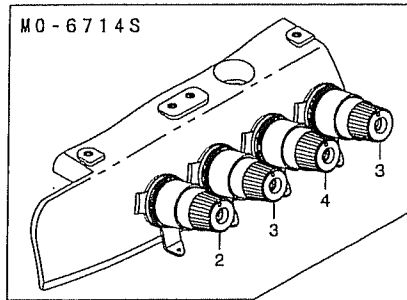
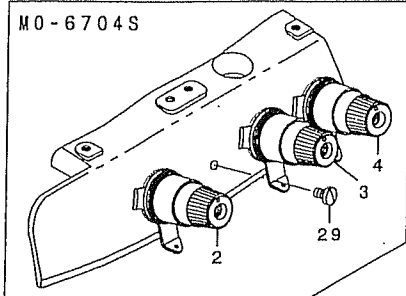
10. PRESSER FOOT COMPONENTS (2)



REF. NO	NOTE	PART NO.	DESCRIPTION	Qty
1		122-53811	PRESSER FOOT ARM	1
2		131-16702	THREAD TRIMMER	1
3		SS-7060510-SP	SCREW 3/32-56 L=4.8	1
4	#01	118-76166	PRESSER FOOT ASM.	1
5		118-72009	PRESSER FOOT HINGE	1
6		SS-6090650-SP	SCREW 9/64-40 L=6	(1)
7		B1530-804-000	STOPPER	(1)
8		WP-0250516-SD	WASHER 2.5X6X0.5	(1)
9		SS-7060610-SP	SCREW 3/32-56 L= 5.5	(1)
10		SS-6060210-SP	SCREW 3/32-56 L= 1.9	(1)
11		B1511-814-000	REAR PRESSER FOOT	(1)
12		B1507-804-C00	PRESSER FOOT	(1)
13		SS-7080520-SP	SCREW 1/8-44 L=4.9	(1)
14		B1508-804-00B	SPRING	(1)
15		B1509-804-C00	STITCH TONGUE	(1)
16		SS-6060440-TP	SCREW 3/32-56 L=3.5	(1)
17		B1510-814-000	CURL GUARD	(1)
18		131-78306	FINGER GUIDE	(1)
19	#02	118-76869	PRESSER FOOT ASM.	(1)
20		118-72009	PRESSER FOOT HINGE	1
21		SS-6090650-SP	SCREW 9/64-40 L=6	(1)
22		B1530-804-000	STOPPER	(1)
23		WP-0250516-SD	WASHER 2.5X6X0.5	(1)
24		SS-7060610-SP	SCREW 3/32-56 L= 5.5	(1)
25		SS-6060210-SP	SCREW 3/32-56 L= 1.9	(1)
26		B1511-814-000	REAR PRESSER FOOT	(1)
27		B1507-814-00P	PRESSER FOOT	(1)
28		SS-7080520-SP	SCREW 1/8-44 L=4.9	(1)
29		B1508-804-00B	SPRING	(1)
30		B1509-814-00P	STITCH TONGUE	(1)
31		SS-6060440-TP	SCREW 3/32-56 L=3.5	(1)
32		B1510-814-000	CURL GUARD	(1)
33		131-78306	FINGER GUIDE	(1)
34	#03	121-53763	PRESSER FOOT ASM.	(1)
35		121-56907	PRESSER FOOT HINGE	1
36		SS-6090650-SP	SCREW 9/64-40 L=6	(1)
37		121-64802	REAR PRESSER FOOT	(1)
38		121-67805	SPRING, FOR REAR PRESSER FOOT	(1)
39		B1513-816-000	NUT, FOR REAR PRESSER FOOT	(1)
40		121-67409	HINGE PIN	(1)
41		121-62202	PRESSER FOOT	(1)
42		121-67607	PRESSER FOOT ARM SPRING	(1)
43		121-67508	HINGE SCREW	(1)
44		SS-6060340-SP	SCREW 3/32-56 L= 2.5	(1)
45		B1514-816-000	SCREW	(1)
46		121-67706	PRESSER FOOT	(1)
47		131-78405	FINGER GUIDE	(1)

Note #01....FOR MO-6704S
#02....FOR MO-6714S
#03....FOR MO-6716S

11. THREAD TENSION COMPONENTS

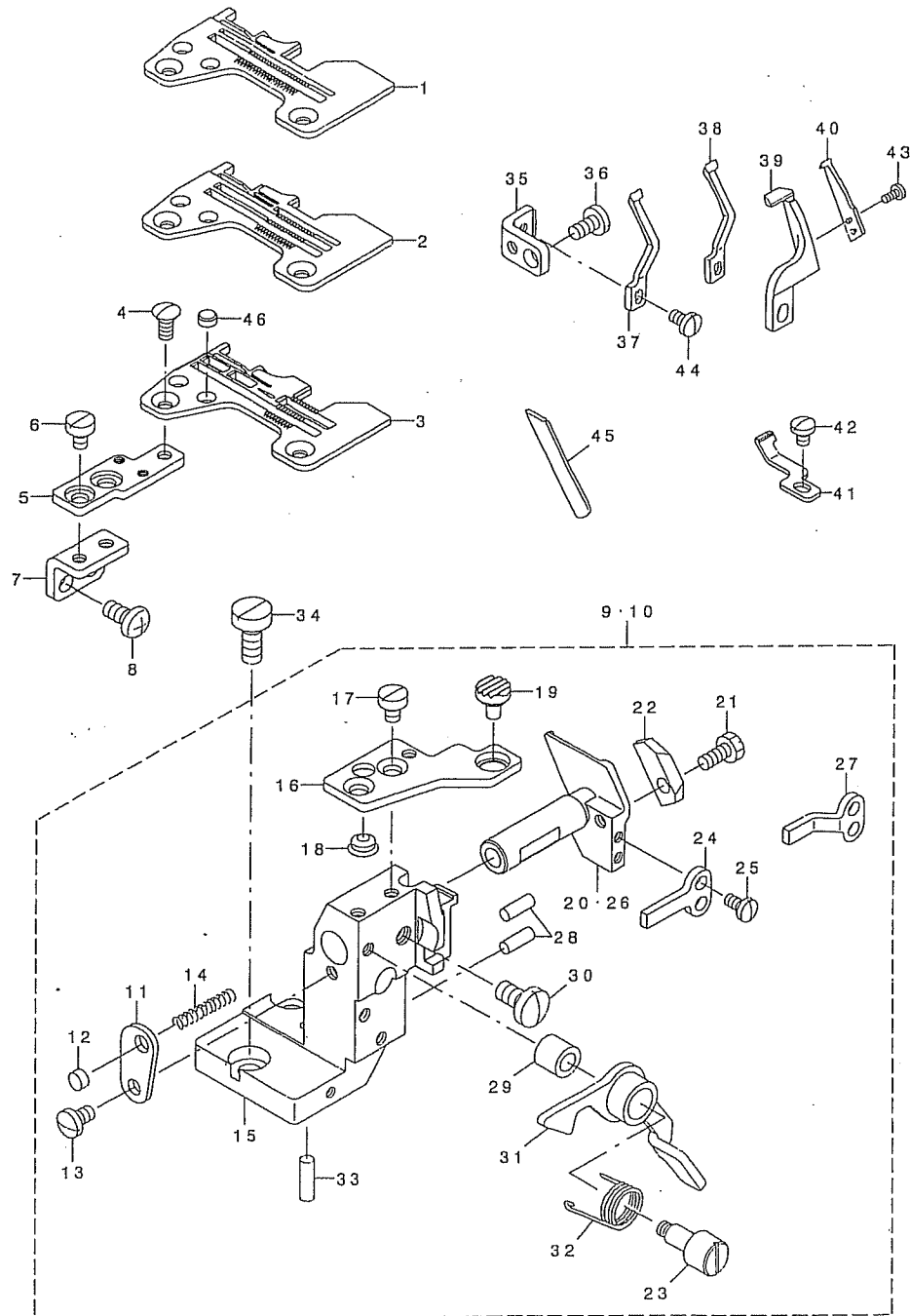


REF.NO	NOTE	PART NO.	DESCRIPTION	Qty
1		132-25008	CENTER THREAD GUIDE	1
2		131-37559	THREAD TENSION SPRING COMPL.	1
3	#01	131-38359	THREAD TENSION SPRING COMPL.	1
4		131-38656	THREAD TENSION SPRING COMPL.	1
5		131-37807	THREAD TENSION SPRING, RED	(1)
6		131-38508	THREAD TENSION SPRING, YELLOW	(1)
7		131-38805	THREAD TENSION SPRING, BLUE	(1)
8		131-37708	THREAD TENSION KNOB, RED	(1)
9		131-38409	THREAD TENSION KNOB, YELLOW	(1)
10		131-38706	THREAD TENSION KNOB, BLUE	(1)
11		131-38904	THREAD TENSION BAR	(1)
12		131-37609	THREAD TENSION DISK PRESSER	(1)
13		131-37906	SPRING BUSHING	(1)
14		131-38102	THREAD TENSION SPRING FELT	(1)
15		131-38201	THREAD TENSION DISK	(2)
16		131-38003	THREAD TENSION RUBBER WASHER	(1)
17	#04	SS-8110410-TP	SCREW 11/64-40 L= 3.5	2
18	#02	132-25107	TENSION DISK THREAD GUIDE	3
19	#03	132-25107	TENSION DISK THREAD GUIDE	4
20	#04	131-39555	THREAD TENSION POST COMPL.	1
21		131-40009	THREAD TENSION POST	(1)
22		131-39605	TENSION DISK THREAD GUIDE	(1)
23		131-39902	THREAD TENSION SPRING FELT	(1)
24		131-39803	THREAD TENSION NUT	(1)
25		131-39704	THREAD TENSION SPRING	(1)
26		229-21407	ROTATION STOPPER	(1)
27		131-38201	THREAD TENSION DISK	(2)
28	#04	PS-0200052-KH	SPRING PIN 2.3X5	1
29	#02	SS-7110710-SL	SCREW 11/64-40 L=7.0	1
30		SS-4110615-SP	SCREW 11/64-40 L=6	2
31	#04	131-28202	THREAD CAM THREAD GUIDE BASE	1
32	#04	131-28301	THREAD CAM THREAD GUIDE A	1
33	#04	131-28400	THREAD CAM THREAD GUIDE B	1
34	#04	131-28509	LOWER THREAD CAM HOOK	1
35	#04	131-28608	LOWER THREAD GUIDE	1
36	#04	131-28707	THREAD GUIDE BASE SPRING	1
37	#04	B2401-816-000	LOOPER THREAD GUIDE TUBE	1
38	#04	131-29457	LOWER THREAD CAM COMPL.	1
39	#04	131-30000	LOWER THREAD CAM SHAFT	1
40	#04	131-29101	LOWER THREAD CONDUIT GUIDE	1
41	#04	B3113-352-000	MOUNTING BRACKET	1
42	#04	SD-0600341-TP	HINGE SCREW D=6.0 H=3.4	1
43	#04	WZ-0640312-KO	WAVED WASHER	1
44	#04	SM-4050855-SP	SCREW M5 L=8	1
45	#04	SS-4090415-SP	SCREW 9/64-40 L=4	1
46	#04	SS-4090415-SP	SCREW 9/64-40 L=4	1
47	#04	SS-4090415-SP	SCREW 9/64-40 L=4	1
48	#04	SS-4090415-SP	SCREW 9/64-40 L=4	1
49	#04	SS-4110515-SP	SCREW 11/64-40 L=5	1
50	#04	SS-5150510-SP	SCREW 15/64-28 L=5	1

Note #01....FOR MO-6704S(1 PC. IS USED.)
FOR MO-6714S,MO-6716S
(2 PC. ARE USED.)
#02....FOR MO-6704S
#03....FOR MO-6714S,MO-6716S
#04....FOR MO-6716S

MO-6700S SERIES No.2

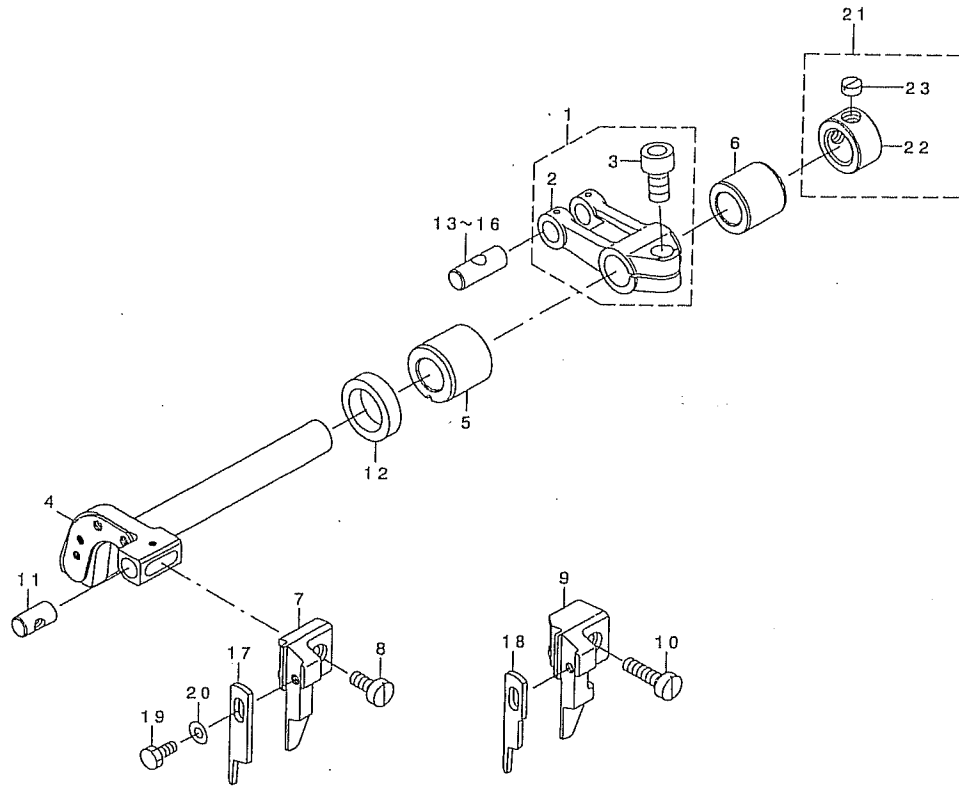
12. LOWER KNIFE COMPONENTS



REF.NO	NOTE	PART NO.	DESCRIPTION	Qty
1	#01	R4200-J6E-D00	THROAT PLATE	1
2	#02	R4305-J6E-E00	THROAT PLATE	1
3	#03	R4508-J6E-D00	THROAT PLATE	1
4		SS-2110910-SL	SCREW 11/64-40 L=9	2
5		131-51204	THROAT PLATE BASE B	1
6		SS-6110610-TP	SCREW 11/64-40 L=6	2
7		122-88908	THROAT PLATE BASE B SUPPORT	1
8		SM-4051055-SP	SCREW	2
9	#04	132-32657	LOWER KNIFE BRACKET ASM.	1
10	#03	132-32756	LOWER KNIFE BRACKET ASM.	1
11		121-33211	SPRING STOPPER	(1)
12		118-06304	PLUG	(1)
13		SS-7110720-SP	SCREW 11/64-40 L=7	(1)
14		118-46607	SPRING	(1)
15		121-32619	LOWER KNIFE BRACKET	(1)
16		121-02208	THROAT PLATE BASE A	(1)
17		SS-6110610-TP	SCREW 11/64-40 L=6	(2)
18		121-03701	RUBBER PLUG B	(1)
19		132-35304	RUBBER PLUG A	(1)
20	#04	121-32700	LOWER KNIFE SLIDE STUD	(1)
21		SS-9111010-SP	SCREW 11/64-40 L=9.5	(1)
22		121-33104	LOWER KNIFE PRESSER PLATE	(1)
23		121-02810	LEVER SHAFT	(1)
24	#04	121-32908	ROTATING STOPPER	(1)
25		SS-7090710-SP	SCREW 9/64-40 L= 6.8	(2)
26	#03	121-32809	LOWER KNIFE SLIDE STUD	(1)
27	#03	121-33005	ROTATING STOPPER	(1)
28		121-33708	HOLDER PIN	(2)
29		121-03107	RUBBER PLUG	(1)
30		SS-7151120-SP	SCREW 15/64-28 L=11	(1)
31		121-02950	LEVER ASM.	(1)
32		118-02006	LEVER SPRING	(1)
33		118-46805	HOLDER PIN	(1)
34		SS-6151440-SP	SCREW 15/64-28 L=14	2
35		131-51105	NEEDLE HOLDER SUPPORT	1
36		SS-7110840-SP	SCREW 11/64-40 L=7.8	1
37	#01	118-90100	NEEDLE GUARD	1
38	#02	118-90308	NEEDLE GUARD	1
39	#03	120-15301	NEEDLE HOLDER	1
40	#03	120-15400	NEEDLE HOLDER	1
41	#03	121-77903	NEEDLE HOLDER	1
42	#03	SS-7090510-SP	SCREW 9/64-40 L= 4.6	1
43	#03	SS-7060510-SP	SCREW 3/32-56 L=4.8	2
44		SS-7090610-SP	SCREW 9/64-40 L=6	1
45		131-50701	LOWER KNIFE	1
46		131-02702	THROAT PLATE COVER	2

Note #01....FOR MO-6704S
#02....FOR MO-6714S
#03....FOR MO-6716S
#04....FOR MO-6704S,MO-6714S

13. UPPER KNIFE COMPONENTS

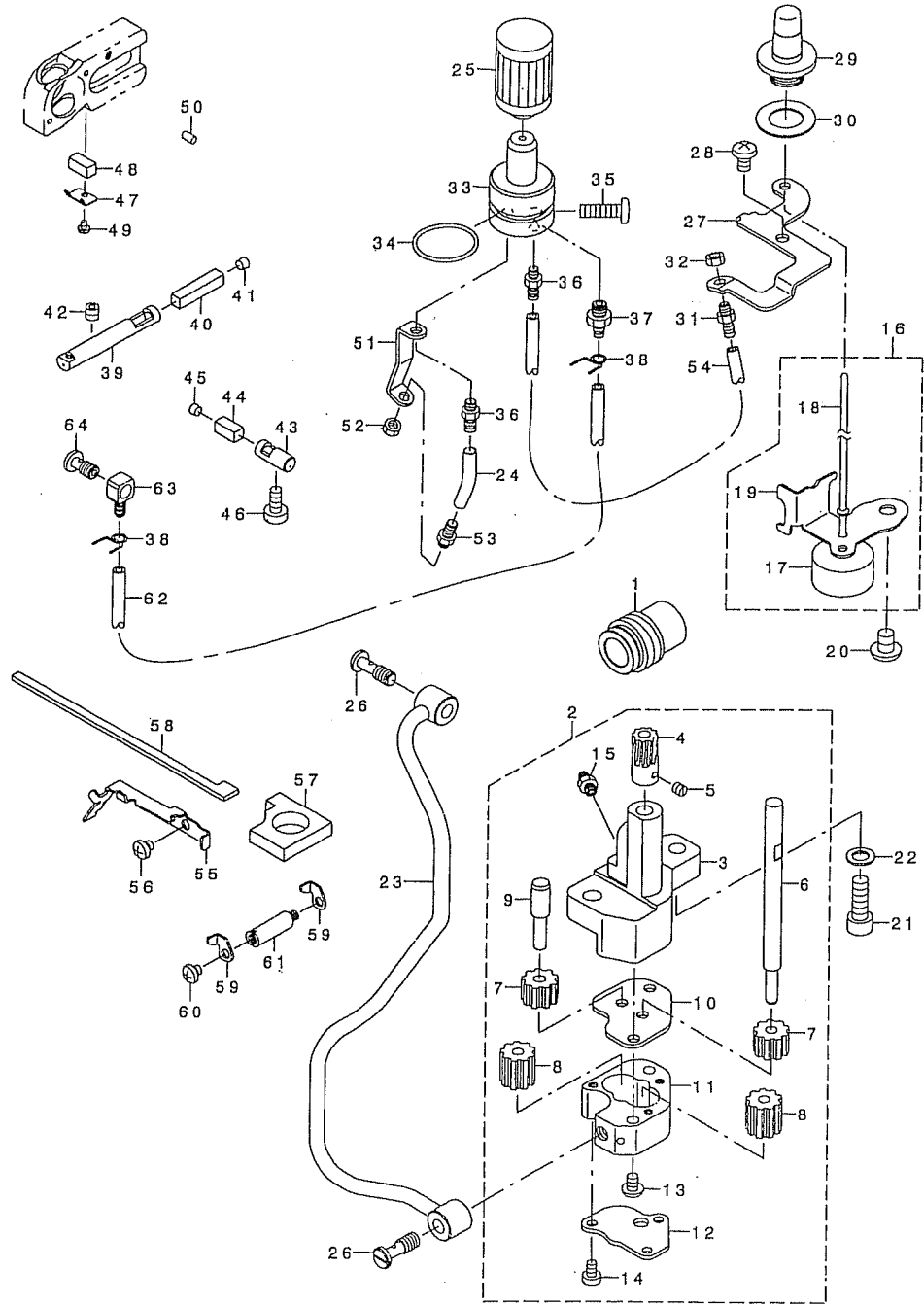


REF.NO	NOTE	PART NO.	DESCRIPTION	Qty
--------	------	----------	-------------	-----

REF.NO	NOTE	PART NO.	DESCRIPTION	Qty
1		131-47558	FEED FORKED ARM ASM.	1
2		131-47509	FEED FORKED ARM	(1)
3		SM-6061402-TP	SCREW M6 L=14	(1)
4		131-51303	KNIFE DRIVING ARM SHAFT	1
5		131-50909	BUSHING, FRONT	1
6		131-51006	BUSHING, REAR	1
7	#01	131-47400	PLAIN KNIFE SUPPORT A	1
8	#01	SS-6111040-SP	SCREW 11/64-40 L= 9.5	1
9	#02	131-47301	PLAIN KNIFE SUPPORT	1
10	#02	SS-6111610-SP	SCREW 11/64-40 L=16	1
11		131-50800	UPPER KNIFE GUIDE SHAFT	1
12		115-66809	OIL SEAL	1
13	#03	131-22007	CRANK PIN A	1
14	#03	131-22106	CRANK PIN B	1
15	#03	131-22205	CRANK PIN C	1
16	#03	131-22304	CRANK PIN D	1
17	#01	131-50503	PLAIN KNIFE	1
18	#02	131-50602	PLAIN KNIFE	1
19		SS-9090813-TP	SCREW 9/64-40 L=8	1
20		WP-0370316-SD	WASHER 3.7X8X0.3	1
21		131-72655	THRUST COLLAR ASM.	1
22		131-72606	THRUST COLLAR	(1)
23		SS-8660330-SP	SCREW 1/4-40 L= 3.0	(2)

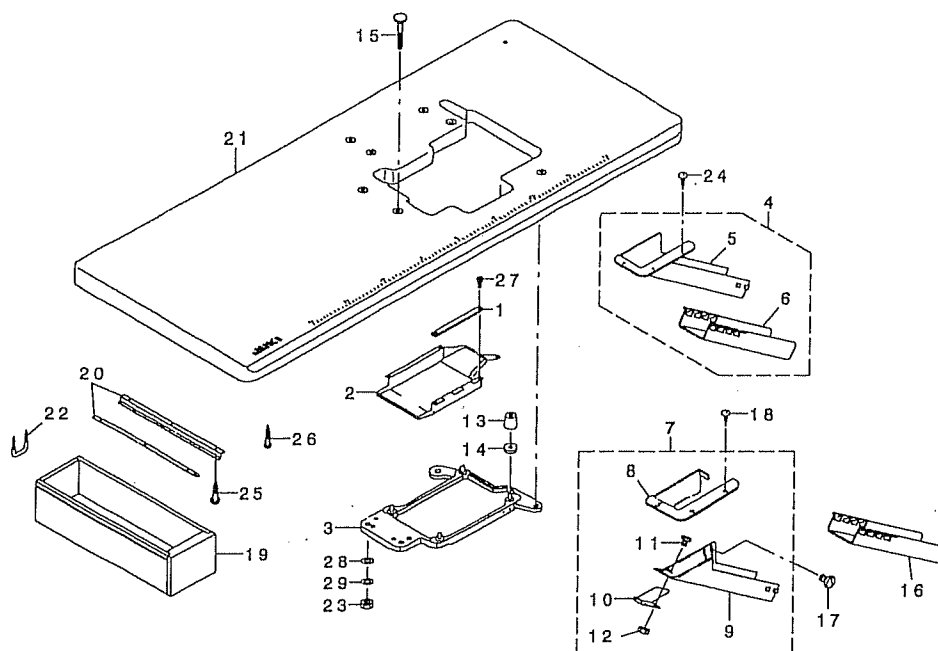
Note #01....FOR MO-6704S,MO-6714S
#02....FOR MO-6716S
#03....SELECTIVE PARTS

14. LUBRICATION MECHANISM COMPONENTS



REF.NO	NOTE	PART NO.	DESCRIPTION	Qty
1		132-30305	WORM -	1
2		123-15958	OIL PUMP ASM.	1
3		123-15909	OIL PUMP	(1)
4		122-56103	WORM GEAR	(1)
5		SS-8110410-TP	SCREW 11/64-40 L= 3.5	(2)
6		119-18109	GEAR PUMP SHAFT LARGE	(1)
7		B3534-352-000	PINION GEAR	(2)
8		118-40303	OIL PUMP PINION	(2)
9		123-17004	GEAR PUMP SHAFT	(1)
10		123-16006	PINION SPACER	(1)
11		123-16105	CASING	(1)
12		123-16204	COVER	(1)
13		SS-4112215-SP	SCREW 11/64-40 L=22	(2)
14		SS-6090650-SP	SCREW 9/64-40 L=6	(3)
15		SQ-1110401-MZ	CONNECTING SCREW	(1)
16		132-29356	FLOAT ASM.	1
17		121-29805	FLOAT	(1)
18		121-29904	OIL GAUGE BAR	(1)
19		132-29307	FLOAT SUPPORT	(1)
20		SM-4060801-SE	SCREW	1
21		SM-6061802-TP	SCREW M6 L=18	2
22		WP-0651056-SD	WASHER 6.5X11X1	2
23		132-28655	LUBRICATION MECHANISM PIPE ASM	1
24		BP-3000001-OR	VINYL PIPE	0.03
25		118-43208	CARTRIDGE FILTER	1
26		SQ-1150454-SD	CONNECTING SCREW	2
27		131-43805	EXHAUST PORT SUPPORT	1
28		SM-4050855-SP	SCREW	1
29		131-43300	OIL GAUGE	1
30		131-44001	OIL GAUGE GASKET	1
31		SQ-1110451-MZ	CONNECTING SCREW	1
32		NS-6110310-SP	NUT 11/64-40	1
33		131-42955	FILTER GUIDE ASM.	1
34		131-70808	RUBBER RING	1
35		SM-4051601-SC	SCREW M5X0.8 L=16	1
36		SQ-1110451-MZ	CONNECTING SCREW	2
37		SQ-1150451-MZ	CONNECTING SCREW	1
38		131-42609	OIL TUBE HOLDER	2
39		131-44100	OILING PIN	1
40		121-30407	OIL FELT	1
41		TA-0400301-MO	PLUG D=4X4.5 L=3	1
42		SM-8050502-TP	SCREW M5 L=5	1
43		131-43409	OILING PIN	1
44		121-30605	OIL FELT	1
45		TA-0400301-MO	PLUG D=4X4.5 L=3	1
46		SS-6121020-SP	SCREW 3/16-28 L= 9.5	1
47		131-43607	OIL FELT PRESSER	1
48		121-30803	OIL FELT	1
49		SS-7060310-SP	SCREW 3/32-56 L=3	1
50		TA-0290601-MO	PLUG D=2.9X3.2 L=6	1
51		132-29208	WORM EXHAUST PORT GUIDE	1
52		NS-6110310-SP	NUT 11/64-40	1
53		SQ-1110451-MZ	CONNECTING SCREW	1
54		236-30007	TUBE	0.17
55		132-28804	OIL FELT GUIDE	1
56		310-18005	SCREW	2
57		132-29109	OIL FELT B	1
58		132-29406	OIL FELT A	1
59		132-28903	OIL FELT PRESSER	2
60		310-18005	SCREW	1
61		132-29000	FELT PRESSER SPACER	1
62		BP-3000001-OR	VINYL PIPE	0.29
63		SQ-0000451-MZ	CONNECTING SCREW	1
64		SQ-1150441-SD	CONNECTING SCREW	1

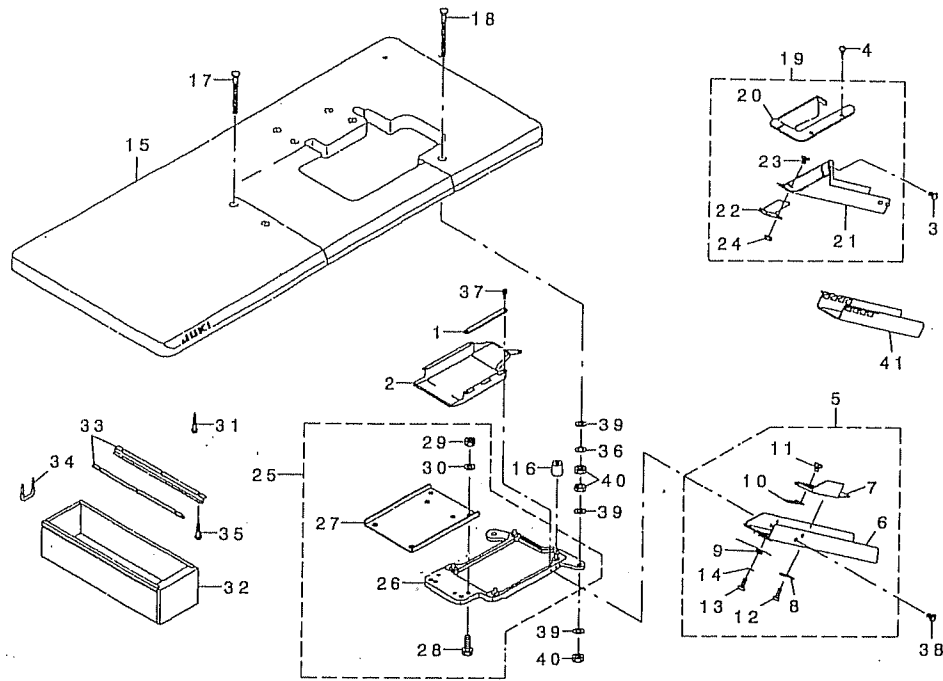
15. SEMI-SUNKEN TYPE TABLE COMPONENTS



REF.NO	NOTE	PART NO.	DESCRIPTION	Qty
1		118-50815	CASE SPONGE	1
2		118-49411	COOLING FAN CASE	1
3		118-49361	FRAME SUPPORT PLATE ASM.	1
4	#01	123-41954	CLOTH WASTE CHUTE ASM.	1
5		123-41905	CLOTH WASTE CHUTE(SEMI-SUNKEN)	(1)
6		123-41806	CLOTH WASTE CHUTE	(1)
7	#02	131-55759	CLOTH WASTE CHUTE ASM.	1
8		131-55601	CLOTH WASTE CHUTE INLET	(1)
9		131-55700	CLOTH WASTE CHUTE, UPPER	(1)
10		131-55502	CHUTE SUPPORT	(1)
11		SS-5090610-SP	SCREW 9/64-40 L=6	(3)
12		NS-6090310-SP	NUT 9/64-40	(3)
13		131-55403	DUST-PROOF RUBBER	4
14		131-56500	DUST-PROOF RUBBER SPACER	4
15		131-55007	HOLDING PLATE BOLT	4
16	#02	123-41806	CLOTH WASTE CHUTE	1
17	#02	SS-5110710-SP	SCREW 11/64-40 L=7	2
18	#02	SK-2351600-SC	WOOD SCREW D=3.5 L=16	3
19		111-55108	DRAWER	1
20		111-55207	DRAWER SUPPORT	2
21		119-59400	TABLE (SEMI-SUNKEN)	1
22		D8204-555-D00	DRAWER STOPPER	1
23		NS-6240630-SE	NUT 3/8-18	4
24	#01	SK-2351600-SC	WOOD SCREW D=3.5 L=16	3
25		SK-3311500-SC	WOOD SCREW D=3.1 L=15	6
26		SK-3513200-SC	WOOD SCREW D=5.1 L=32	4
27		SS-6090630-TP	SCREW 9/64-40 L=6	5
28		WP-1002036-SE	WASHER 10X21X2	4
29		WS-1002560-KR	SPRING WASHER 10X18X2.5	4

Note #01....EXCEPT JE
#02....FOR JE

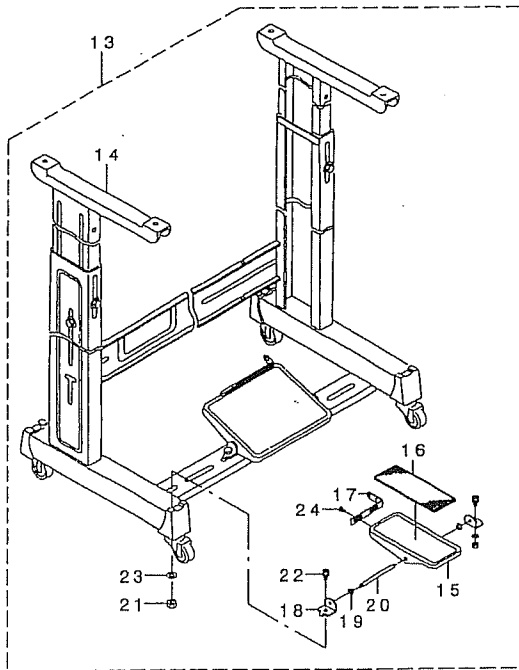
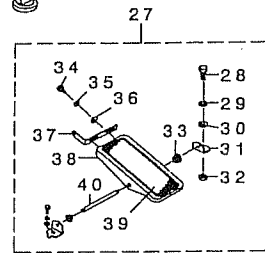
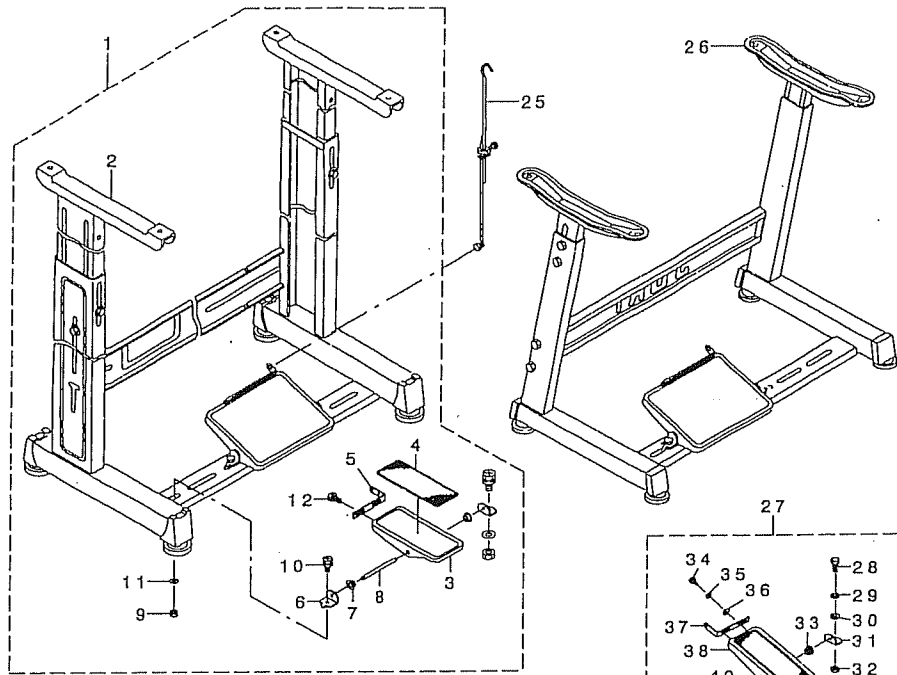
16. FULLY-SUNKEN TYPE TABLE COMPONENTS



REF.NO	NOTE	PART NO.	DESCRIPTION	Qty
1		118-50815	CASE SPONGE	1
2		118-49411	COOLING FAN CASE	1
3	#02	SS-5110710-SP	SCREW 11/64-40 L=7	2
4	#02	SK-2351600-SC	WOOD SCREW D=3.5 L=16	3
5	#01	131-55858	CLOTH WASTE CHUTE ASM.	1
6		131-56203	CLOTH WASTE CHUTE	(1)
7		131-56302	CLOTH WASTE CHUTE INLET	(1)
8		131-55908	CHUTE INLET LEVER	(1)
9		131-56005	CHUTE INLET SPRING	(1)
10		131-56104	CHUTE INLET RUBBER	(1)
11		SS-8090420-SP	SCREW 9/64-40 L= 4.0	(2)
12		ST-6030821-0A	SCREW D=3-24 L=8	(2)
13		ST-6030821-0A	SCREW D=3-24 L=8	(1)
14		WP-0370316-SD	WASHER 3.7X8X0.3	(1)
15		119-59558	TABLE ASM.	1
16		131-55403	DUST-PROOF RUBBER	4
17		131-55106	HOLDING PLATE BOLT C	2
18		131-55205	HOLDING PLATE BOLT D	2
19	#02	131-55759	CLOTH WASTE CHUTE ASM.	1
20		131-55601	CLOTH WASTE CHUTE INLET	(1)
21		131-55700	CLOTH WASTE CHUTE, UPPER	(1)
22		131-55502	CHUTE SUPPORT	(1)
23		SS-5090610-SP	SCREW 9/64-40 L=6	(3)
24		NS-6090310-SP	NUT 9/64-40	(3)
25		118-49379	FRAME SUPPORT PLATE ASM.	1
26		118-49361	FRAME SUPPORT PLATE ASM.	(1)
27		131-55304	FRAME HOLDING PLATE COUPLING	(1)
28		SM-9082513-CF	SCREW M8 L=25	(4)
29		NM-6080600-SM	NUT M8	(4)
30		WP-0850002-SC	WASHER 8.5X18X1.6	(4)
31		SK-3513200-SC	WOOD SCREW D=5.1 L=32	4
32		111-55108	DRAWER	1
33		111-55207	DRAWER SUPPORT	2
34		D8204-555-D00	DRAWER STOPPER	1
35		SK-3311500-SC	WOOD SCREW D=3.1 L=15	6
36		WS-1002560-KR	SPRING WASHER 10X18X2.5	4
37		SS-6090630-TP	SCREW 9/64-40 L=6	5
38	#01	SS-5110710-SP	SCREW 11/64-40 L=7	2
39		WP-1002036-SE	WASHER 10X21X2	12
40		NS-6240630-SE	NUT 3/8-18	12
41	#02	123-41806	CLOTH WASTE CHUTE	1

Note #01....EXCEPT JE
#02....FOR JE

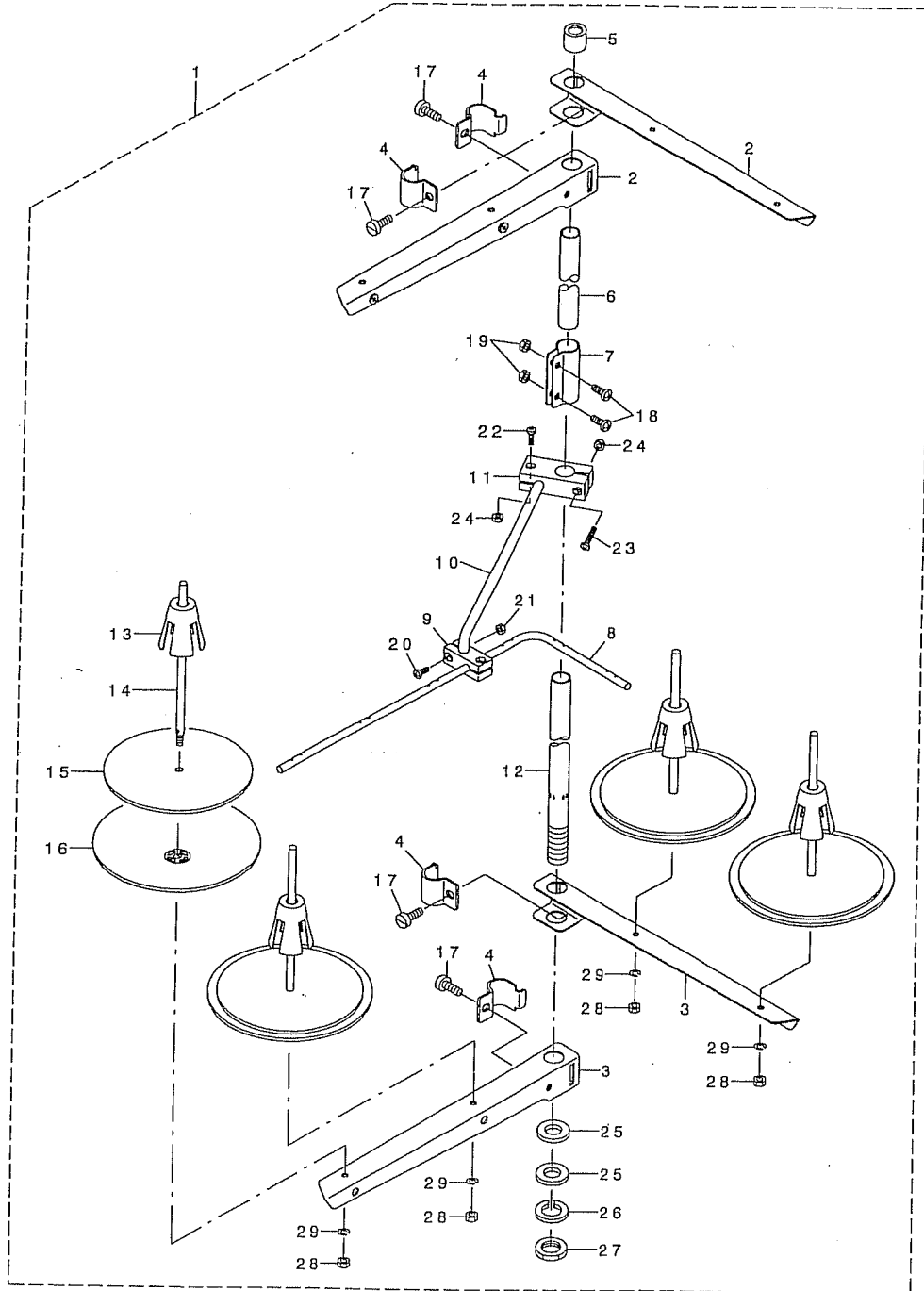
17. STAND COMPONENTS (Z · T)



REF.NO	NOTE	PART NO.	DESCRIPTION	Qty
1		119-60655	T STAND JUNCTION	1
2		111-57567	T LEG JUNCTION	(1)
3		GPF-06060000	PEDAL	(1)
4		GPF-06070000	PEDAL MAT	(1)
5		GPF-06080000	PEDAL ADJUSTING PLATE	(1)
6		111-59001	PEDAL SHAFT BRACKET	(2)
7		D8113-555-B00	PEDAL BUSHING	(2)
8		B8153-771-000	PEDAL CONNECTING ROD	(1)
9		NM-6080001-SE	NUT M8	(2)
10		SL-9082091-SE	WASHER HEXAGONAL BOLT	(2)
11		WP-0871602-SE	WASHER 8.7X18X1.6	(2)
12		SL-9061291-SE	WASHER HEXAGONAL BOLT M6 L=12	(2)
13		119-60754	T STAND JUNCTION(WITH CASTER)	1
14		111-59365	T STAND JUNCTION	(1)
15		GPF-06060000	PEDAL	(1)
16		GPF-06070000	PEDAL MAT	(1)
17		GPF-06080000	PEDAL ADJUSTING PLATE	(1)
18		111-59001	PEDAL SHAFT BRACKET	(2)
19		D8113-555-B00	PEDAL BUSHING	(2)
20		B8153-771-000	PEDAL CONNECTING ROD	(1)
21		NM-6080001-SE	NUT M8	(2)
22		SL-9082091-SE	WASHER HEXAGONAL BOLT	(2)
23		WP-0871602-SE	WASHER 8.7X18X1.6	(2)
24		SL-9061291-SE	WASHER HEXAGONAL BOLT M6 L=12	(2)
25		B7114-012-OA0	MOTOR CONNECTING ROD ASM.	1
26		111-51065	Z LEG JUNCTION (B)	1
27		B8151-771-OA0	PEDAL ASM.	1
28		SM-9082023-SE	SCREW M8 L=20	(2)
29		WS-0861410-KR	SPRING WASHER 8.6X15X1.4	(2)
30		WP-0871602-SE	WASHER 8.7X18X1.6	(4)
31		111-51909	PEDAL SHAFT BRACKET	(2)
32		NM-6080721-SE	NUT M8	(2)
33		D8113-555-B00	PEDAL BUSHING	(2)
34		SM-9061203-SE	SCREW M6 L=12	(2)
35		WS-0621210-KR	SPRING WASHER 6.2X11.4X1.2	(2)
36		WP-0671016-SE	WASHER 6.7X13X1	(2)
37		112-46600	PEDAL ADJUSTING PLATE	(1)
38		112-46501	PEDAL	(1)
39		B8152-771-000	PEDAL MAT	(1)
40		B8153-771-000	PEDAL CONNECTING ROD	(1)

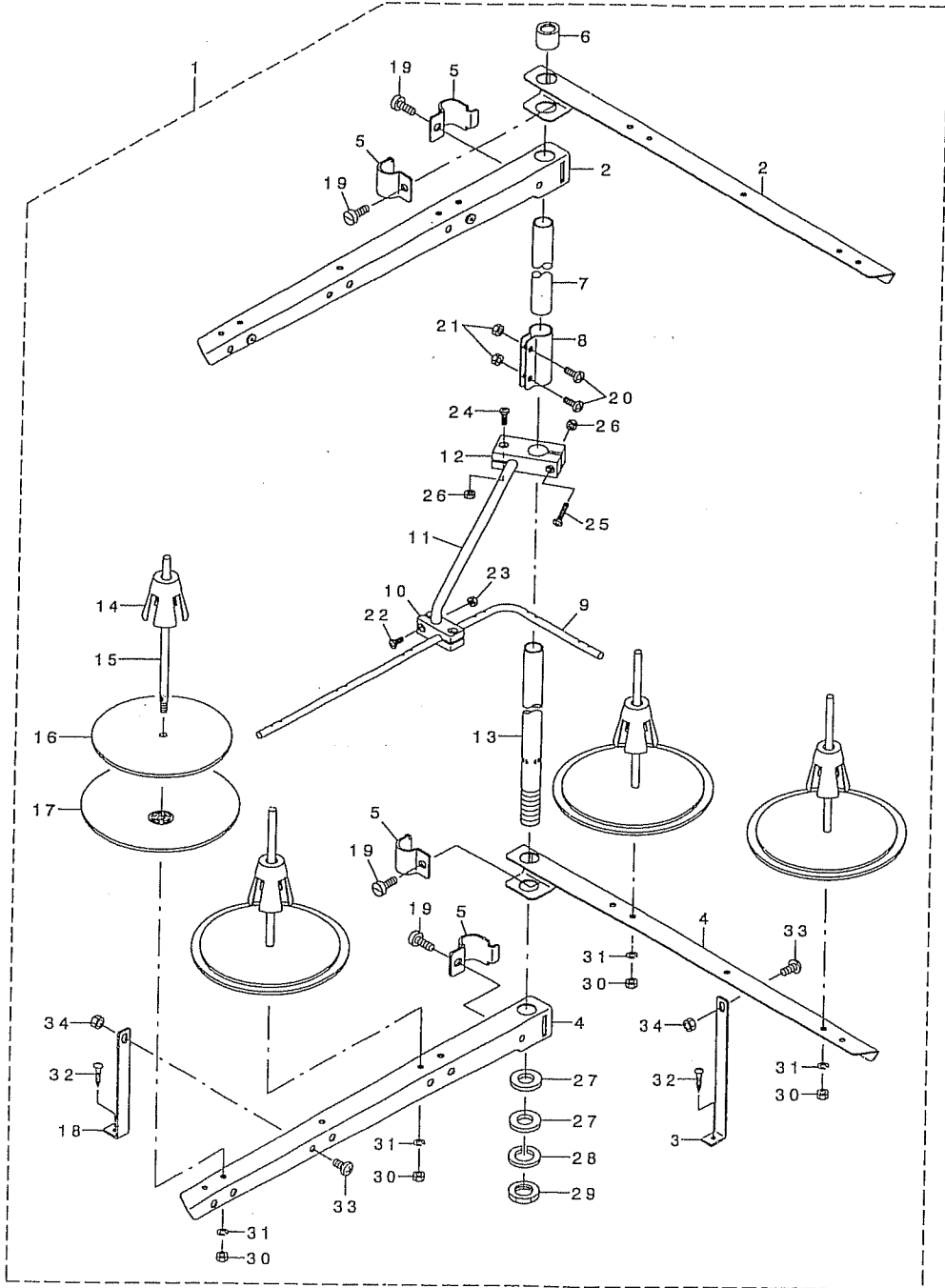
MO-6700S SERIES No.2

18. THREAD STAND COMPONENTS (FOR MO-6704S, MO-6714S)



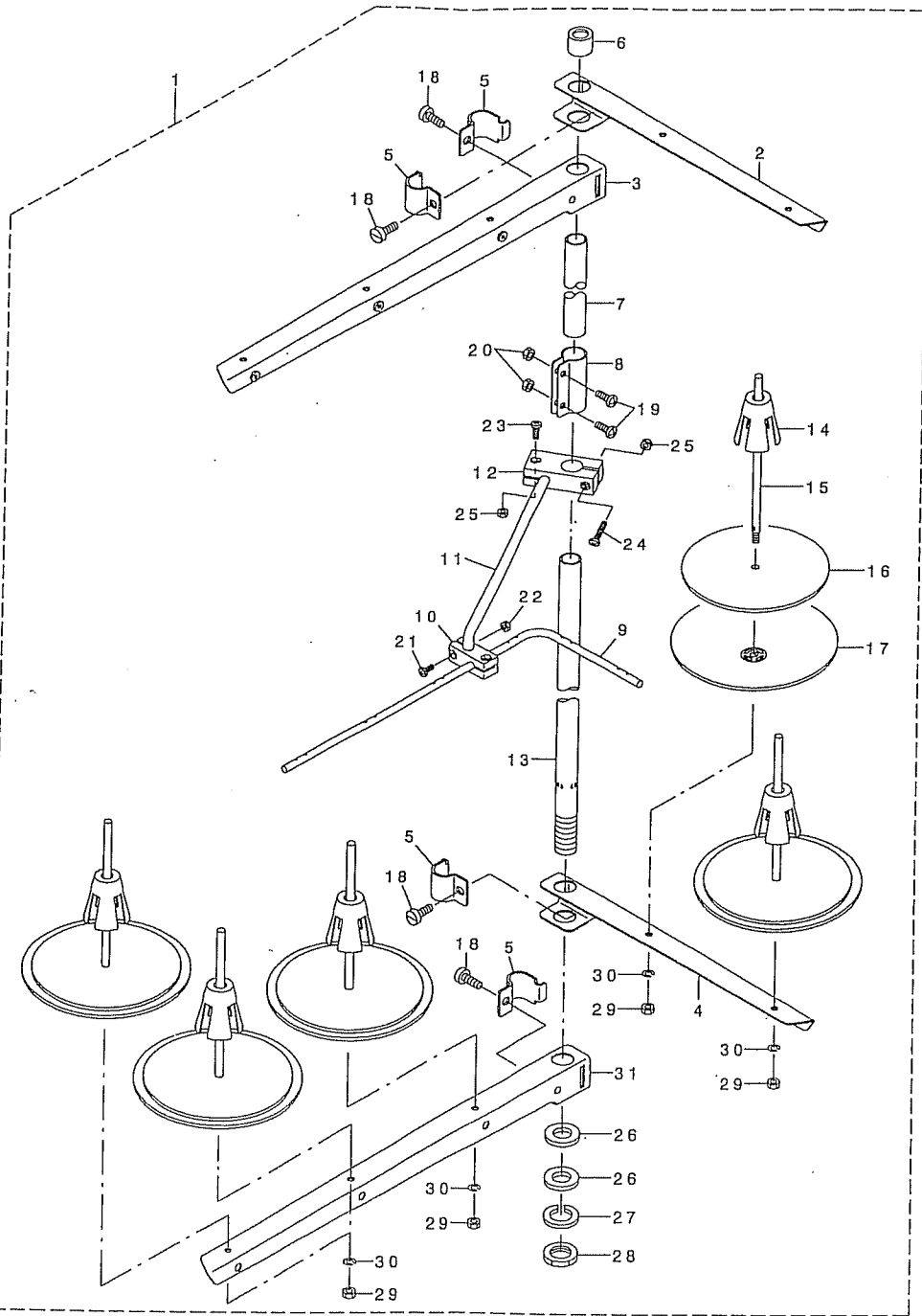
REF.NO	NOTE	PART NO.	DESCRIPTION	Qty
1		131-67556	THREAD STANDING DEVICE ASM.	1
2		229-30556	SPOOL REST ARM ASM.	(2)
3		229-30507	SPOOL REST ARM	(2)
4		229-30705	THREAD GUIDE ARM JOINT	(4)
5		229-31406	THREAD STANDING ROD RUBBER CAP	(1)
6		229-30408	THREAD STANDING ROD, UPPER	(1)
7		229-31307	THREAD STANDING ROD JOINT	(1)
8		131-67903	THREAD STANDING THREAD GUIDE	(1)
9		131-68000	THREAD STANDING GUIDE BASE	(1)
10		131-68109	THREAD STANDING GUIDE ARM	(1)
11		131-68208	THREAD STANDING GUIDE ARM BASE	(1)
12		229-30309	THREAD STANDING ROD, LOWER	(1)
13		229-31109	SPOOL RETAINER	(4)
14		229-31000	SPOOL PIN	(4)
15		229-30903	SPOOL REST CUSHION	(4)
16		229-30804	SPOOL REST	(4)
17		SM-6061610-SC	SCREW M6 L=16	(4)
18		SM-4051405-SE	SCREW M5 L=14	(2)
19		NM-6050001-SE	NUT M5	(2)
20		SM-4041001-SC	SCREW M4X0.7 L=10	(2)
21		NM-6040002-SE	NUT M4X0.7	(2)
22		SM-4041201-SC	SCREW M4 L=12	(1)
23		SM-4042001-SC	SCREW M4 X 20	(1)
24		NM-6040002-SE	NUT M4X0.7	(2)
25		WP-1612616-SE	WASHER 16X30X2.6	(2)
26		WS-1643202-KR	SPRING WASHER	(1)
27		NM-6160511-SE	NUT M16X1.5	(1)
28		NM-6050001-SE	NUT M5	(4)
29		WS-0510002-KN	SPRING WASHER	(4)

19. THREAD STAND COMPONENTS (MO-6704S, MO-6714S SPECIAL ORDER PARTS)



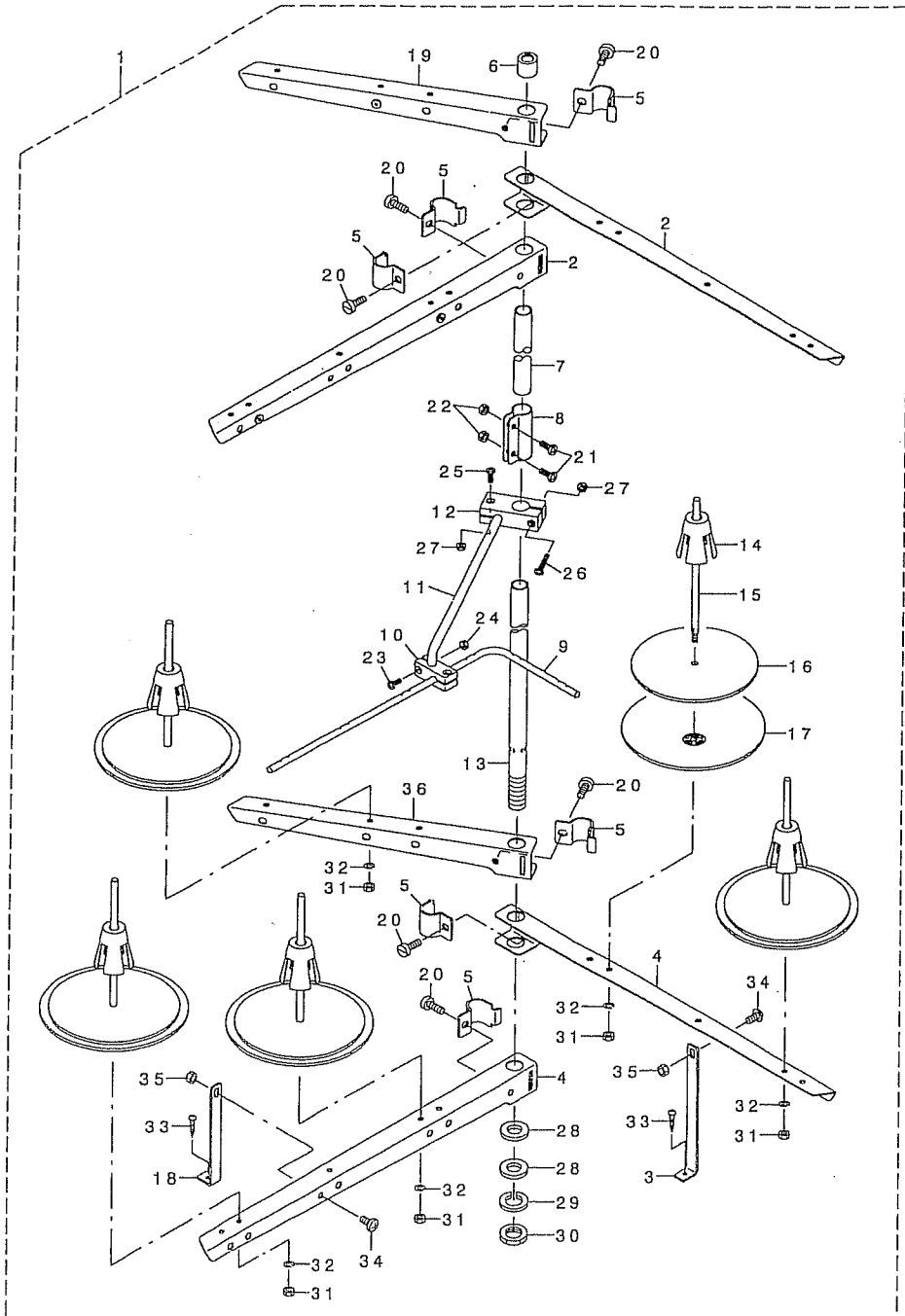
REF.NO	NOTE	PART NO.	DESCRIPTION	Qty
1		131-67754	THREAD STANDING DEVICE ASM.	1
2		131-68851	THREAD STANDING ARM ASM. ,LONG	(2)
3		131-68505	THREAD GUIDE ARM B	(1)
4		131-68802	THREAD STANDING ARM ,LONG	(2)
5		229-30705	THREAD GUIDE ARM JOINT	(4)
6		229-31406	THREAD STANDING ROD RUBBER CAP	(1)
7		229-30408	THREAD STANDING ROD, UPPER	(1)
8		229-31307	THREAD STANDING ROD JOINT	(1)
9		131-67903	THREAD GUIDE	(1)
10		131-68000	THREAD GUIDE BASE ,LOWER	(1)
11		131-68109	THREAD GUIDE ARM	(1)
12		131-68208	THREAD GUIDE ARM BASE	(1)
13		229-30309	THREAD STANDING ROD, LOWER	(1)
14		229-31109	SPOOL RETAINER	(4)
15		229-31000	SPOOL PIN	(4)
16		229-30903	SPOOL REST CUSHION	(4)
17		229-30804	SPOOL REST	(4)
18		131-68406	THREAD STANDING ARM SUPPORT, A	(1)
19		SM-6061610-SC	SCREW M6 L=16	(4)
20		SM-4051405-SE	SCREW M5 L=14	(2)
21		NM-6050001-SE	NUT M5	(2)
22		SM-4041001-SC	SCREW M4X0.7 L=10	(2)
23		NM-6040002-SE	NUT M4X0.7	(2)
24		SM-4041201-SC	SCREW M4 L=12	(1)
25		SM-4042001-SC	SCREW M4 X 20	(1)
26		NM-6040002-SE	NUT M4X0.7	(2)
27		WP-1612616-SE	WASHER 16X30X2.6	(2)
28		WS-1643202-KR	SPRING WASHER	(1)
29		NM-6160511-SE	NUT M16X1.5	(1)
30		NM-6050001-SE	NUT M5	(4)
31		WS-0510002-KN	SPRING WASHER	(4)
32		SK-3382001-SE	SCREW D=3.8 L=20	(2)
33		SM-4061201-SE	SCREW M6 L=12	(2)
34		NM-6060001-SE	NUT M6	(2)

20. THREAD STAND COMPONENTS (FOR MO-6716S)



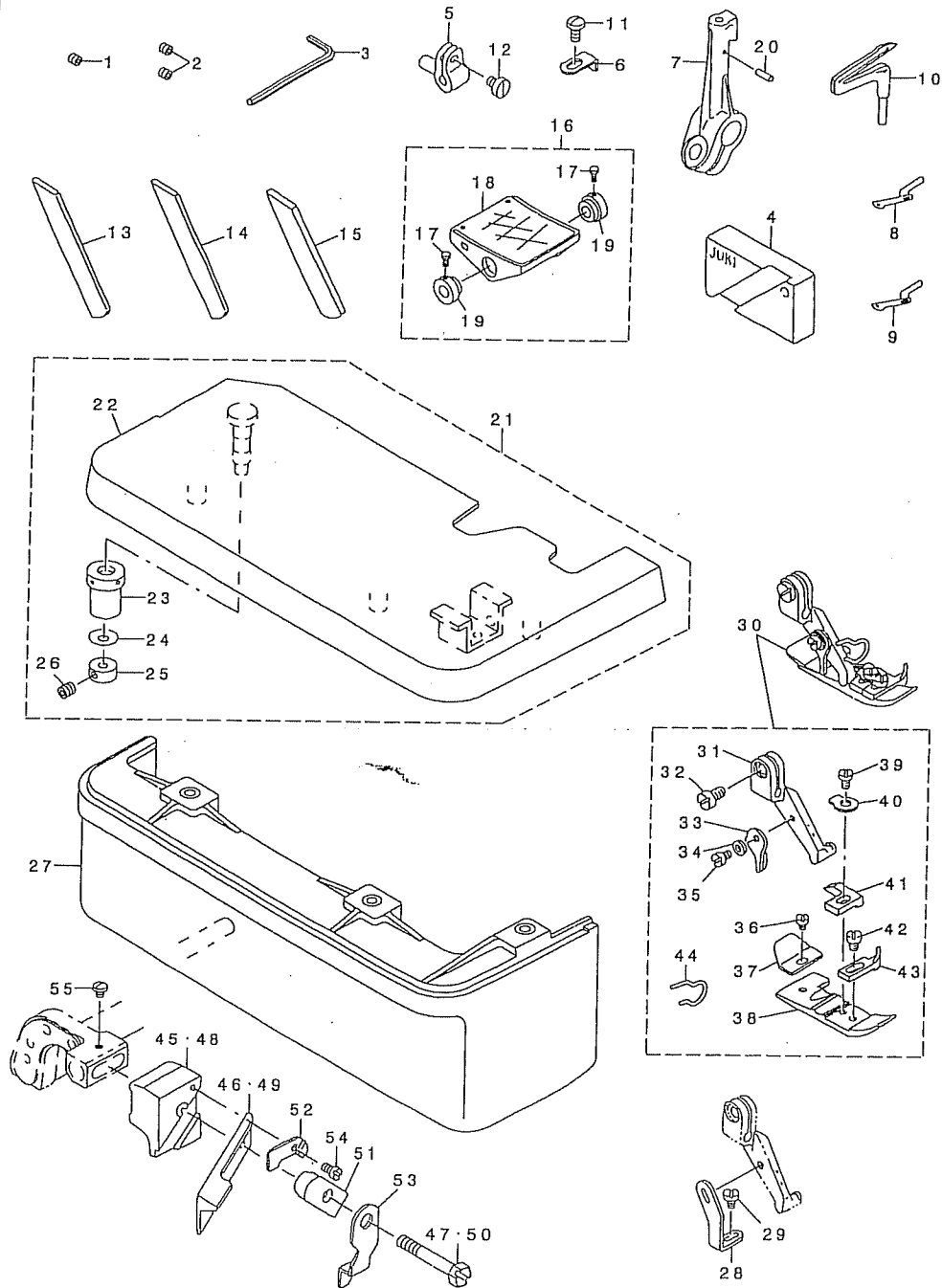
REF. NO	NOTE	PART NO.	DESCRIPTION	Qty
1		131-67655	THREAD STANDING DEVICE ASM.	1
2		229-30556	THREAD STANDING ARM ASM.	(1)
3		131-68356	THREAD STANDING ARM ASM. ,LONG	(1)
4		229-30507	THREAD STANDING ARM	(1)
5		229-30705	THREAD GUIDE ARM JOINT	(4)
6		229-31406	THREAD STANDING ROD RUBBER CAP	(1)
7		229-30408	THREAD STANDING ROD, UPPER	(1)
8		229-31307	THREAD STANDING ROD JOINT	(1)
9		131-67903	THREAD GUIDE	(1)
10		131-68000	THREAD GUIDE BASE, LOWER	(1)
11		131-68109	THREAD GUIDE ARM	(1)
12		131-68208	THREAD GUIDE ARM BASE	(1)
13		229-30309	THREAD STANDING ROD, LOWER	(1)
14		229-31109	SPOOL RETAINER	(5)
15		229-31000	SPOOL PIN	(5)
16		229-30903	SPOOL REST CUSHION	(5)
17		229-30804	SPOOL REST	(5)
18		SM-6061610-SC	SCREW M6 L=16	(4)
19		SM-4051405-SE	SCREW M5 L=14	(2)
20		NM-6050001-SE	NUT M5	(2)
21		SM-4041001-SC	SCREW M4X0.7 L=10	(2)
22		NM-6040002-SE	NUT M4X0.7	(2)
23		SM-4041201-SC	SCREW M4 L=12	(1)
24		SM-4042001-SC	SCREW M4 X 20	(1)
25		NM-6040002-SE	NUT M4X0.7	(2)
26		WP-1612616-SE	WASHER 16X30X2.6	(2)
27		WS-1643202-KR	SPRING WASHER	(1)
28		NM-6160511-SE	NUT M16X1.5	(1)
29		NM-6050001-SE	NUT M5	(5)
30		WS-0510002-KN	SPRING WASHER	(5)
31		131-68307	THREAD STANDING ARM ,LONG	(1)

21. THREAD STAND COMPONENTS
(MO-6716S SPECIAL ORDER PARTS)



REF.NO	NOTE	PART NO.	DESCRIPTION	Qty
1		131-67853	THREAD STANDING DEVICE ASM.	1
2		131-68851	THREAD STANDING ARM ASM. ,LONG	(2)
3		131-68505	THREAD STANDING ARM SUPPORT B	(1)
4		131-68802	THREAD STANDING ARM ,LONG	(2)
5		229-30705	THREAD GUIDE ARM JOINT	(6)
6		229-31406	THREAD STANDING ROD RUBBER CAP	(1)
7		229-30408	THREAD STANDING ROD, UPPER	(1)
8		229-31307	THREAD STANDING ROD JOINT	(1)
9		131-67903	THREAD STANDING THREAD GUIDE	(1)
10		131-68000	THREAD GUIDE BASE, LOWER	(1)
11		131-68109	THREAD GUIDE ARM BASE	(1)
12		131-68208	THREAD GUIDE ARM BASE	(1)
13		229-30309	THREAD STANDING ROD, LOWER	(1)
14		229-31109	SPOOL RETAINER	(5)
15		229-31000	SPOOL PIN	(5)
16		229-30903	SPOOL REST CUSHION	(5)
17		229-30804	SPOOL REST	(5)
18		131-68406	THREAD STANDING ARM SUPPORT A	(1)
19		131-68950	THREAD STANDING ARM A ASM.	(1)
20		SM-6061610-SC	SCREW M6 L=16	(6)
21		SM-4051405-SE	SCREW M5 L=14	(2)
22		NM-6050001-SE	NUT M5	(2)
23		SM-4041001-SC	SCREW M4X0.7 L=10	(2)
24		NM-6040002-SE	NUT M4X0.7	(2)
25		SM-4041201-SC	SCREW M4 L=12	(1)
26		SM-4042001-SC	SCREW M4 X 20	(1)
27		NM-6040002-SE	NUT M4X0.7	(2)
28		WP-1612616-SE	WASHER 16X30X2.6	(2)
29		WS-1643202-KR	SPRING WASHER	(1)
30		NM-6160511-SE	NUT M16X1.5	(1)
31		NM-6050001-SE	NUT M5	(5)
32		WS-0510002-KN	SPRING WASHER	(5)
33		SK-3382001-SE	SCREW D=3.8 L=20	(2)
34		SM-4061201-SE	SCREW M6 L=12	(2)
35		NM-6060001-SE	NUT M6	(2)
36		131-68901	THREAD STANDING ARM A	(1)

22. SPECIAL ORDER PARTS COMPONENTS



REF.NO	NOTE	PART NO.	DESCRIPTION	Qty
1	#01	SS-8080322-TP	SCREW 1/8-44 L=3.2	1
2	#02	SS-8080322-TP	SCREW 1/8-44 L=3.2	2
3		B9112-804-000	SPANNER	1
4		119-96907	LOWER KNIFE GAUGE	1
5		115-44707	UPPER LOOPER SUPPORT ARM	1
6	#03	118-98103	PRESSER FOOT AUXILIARY PLATE	1
7		121-23709	LOWER LOOPER SUPPORT ARM	1
8	#04	B2519-804-000	UPPER LOOPER	1
9	#05	B2519-814-000	UPPER LOOPER	1
10		B2521-804-000	LOWER LOOPER	1
11	#03	SS-4080620-TP	SCREW 1/8-44 L=6	1
12		SS-6080410-SP	SCREW 1/8-44 L=4	1
13		118-47605	LOWER KNIFE	1
14		119-64509	CERAMIC LOWER KNIFE	1
15		119-92005	LOWER KNIFE	1
16		119-65753	PEDAL ASH.	1
17		SM-9061203-SE	SCREW M6 L=12	(2)
18		119-65704	PEDAL	(1)
19		119-65803	PEDAL THRUST COLLAR	(2)
20		PS-0200062-KH	SPRING PIN 2X6	1
21	#06	121-05458	CLOTH PLATE ASM.	1
22		121-04550	CLOTH PLATE ASM.	(1)
23		115-01301	ECCENTRIC BUSHING	(1)
24		WZ-0420350-KP	DISC SPRING	(1)
25		CS-0400671-SD	THRUST HOLDER	(1)
26		SM-8040302-TP	SETScrew	(1)
27	#06	119-49104	CLOTH BASE COVER	1
28	#03	B1539-804-000	PRESSER FOOT FIXING PLATE	1
29	#03	SS-6060410-TP	SCREW 3/32-56 L= 3.5	1
30	#05	121-52468	PRESSER FOOT. (FINGER GUARD).	1
31		118-72009	PRESSER FOOT HINGE	(1)
32		SS-6090650-SP	SCREW 9/64-40 L=6	(1)
33		B1530-804-000	STOPPER	(1)
34		WP-0250516-SD	WASHER 2.5X6X0.5	(1)
35		SS-7060610-SP	SCREW 3/32-56 L= 5.5	(1)
36		SS-6060210-SP	SCREW 3/32-56 L= 1.9	(1)
37		B1511-814-000	REAR PRESSER FOOT	(1)
38		B1507-814-00P	PRESSER FOOT	(1)
39		SS-7080520-SP	SCREW 1/8-44 L=4.9	(1)
40		B1508-804-00B	SPRING	(1)
41		121-60008	STITCH TONGUE	(1)
42		SS-6060440-TP	SCREW 3/32-56 L=3.5	(1)
43		B1510-814-000	CURL GUARD	(1)
44		131-78306	FINGER GUARD	(1)
45	#03	115-98000	UPPER KNIFE SUPPORT	1
46	#03	118-45807	UPPER KNIFE	1
47	#03	SS-9111610-SP	SCREW 11/64-40 L=16	1
48	#06	118-45500	UPPER KNIFE SUPPORT	1
49	#06	118-45906	UPPER KNIFE	1
50	#06	SS-9112310-SP	SCREW 11/64-40 L=23	1
51	#06	115-65504	UPPER KNIFE PRESSER PLATE	1
52		115-65702	WASHER	1
53		118-48405	UPPER KNIFE COVER	1
54		SS-4060310-SP	SCREW 3/32-56 L=2.5	1
55		SS-4060310-SP	SCREW 3/32-56 L=2.5	1

Note #01...FOR MO-6704S
#02...FOR MO-6714S,MO-6716S
#03...FOR MO-6704S,MO-6714S
#04...FOR MO-6704S,MO-6716S
#05...FOR MO-6714S
#06...FOR MO-6716S

制造厂：重机(上海)工业有限公司
地址：上海市嘉定区兴平路435号

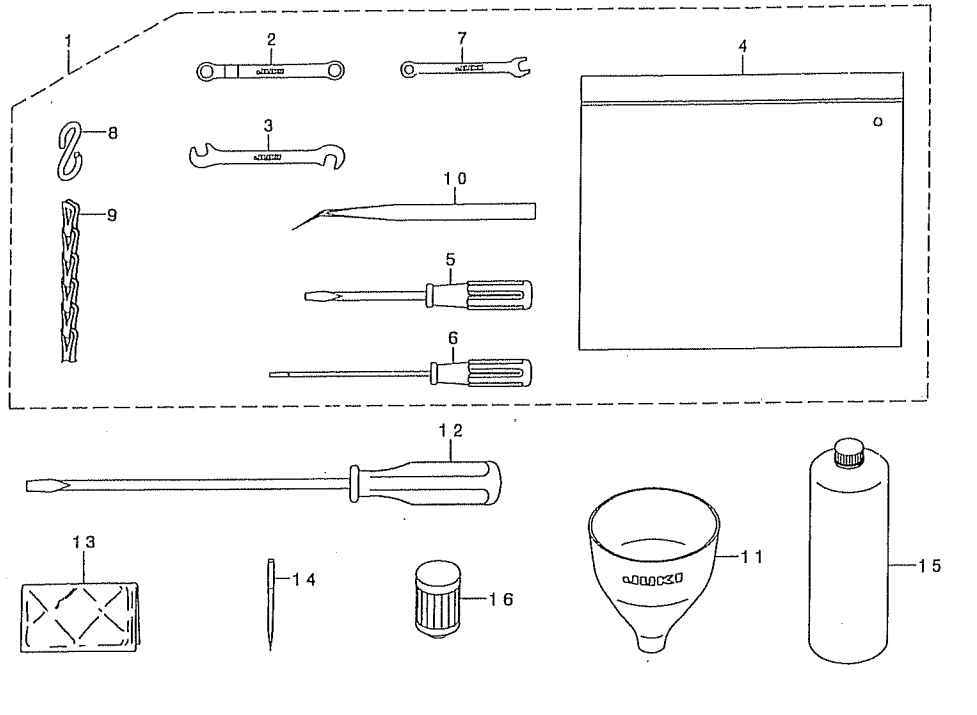
JUKI CORPORATION

INTERNATIONAL SALES H.Q.
8-2-1, KOKURYO-CHO, CHOFU-SHI
TOKYO 182-8655, JAPAN

PHONE: (81)3-3430-4001 to 4005
FAX: (81)3-3430-4909, 4914, 4984
TELEX: J22967

Copyright © 2002 JUKI CORP.
All rights reserved throughout the world.

23. ACCESSORIES PARTS COMPONENTS



REF.NO	NOTE	PART NO.	DESCRIPTION	Qty
1		131-60858	ACCESSORIE BAG ASM.	1
2		131-60007	RING SPANNER	(1)
3		131-60205	PIN SPANNER	(1)
4		229-32800	ACCESSORIE BAG	(1)
5		229-33105	SCREW DRIVER, MIDDLE	(1)
6		123-47308	SCREW DRIVER (SMALL)	(1)
7		131-60106	SPANNER (5X6)	(1)
8		131-60304	S SHAPED HOOK	(2)
9		131-60403	CHAIN	(1)
10		122-88403	TWEEZERS	(1)
11		131-60601	FUNNEL	1
12		229-33006	SCREW DRIVER, LARGE	1
13		229-33303	VINYL COVER	1
14		MDC-270B1104	NEEDLE DCX27 #11-4EA.	1
15		MWL-018900CA	JUKI MACHINE OIL 18	1
16		118-43208	CARTRIDGE FILTER	1